

Bristol-Myers Squibb Foundation Grantee Summit 2016

New Orleans, Louisiana | April 11-13, 2016



Bristol-Myers Squibb Foundation
**Specialty Care for
Vulnerable Populations**
Care Collaborations & Patient Support

Bristol-Myers Squibb Foundation



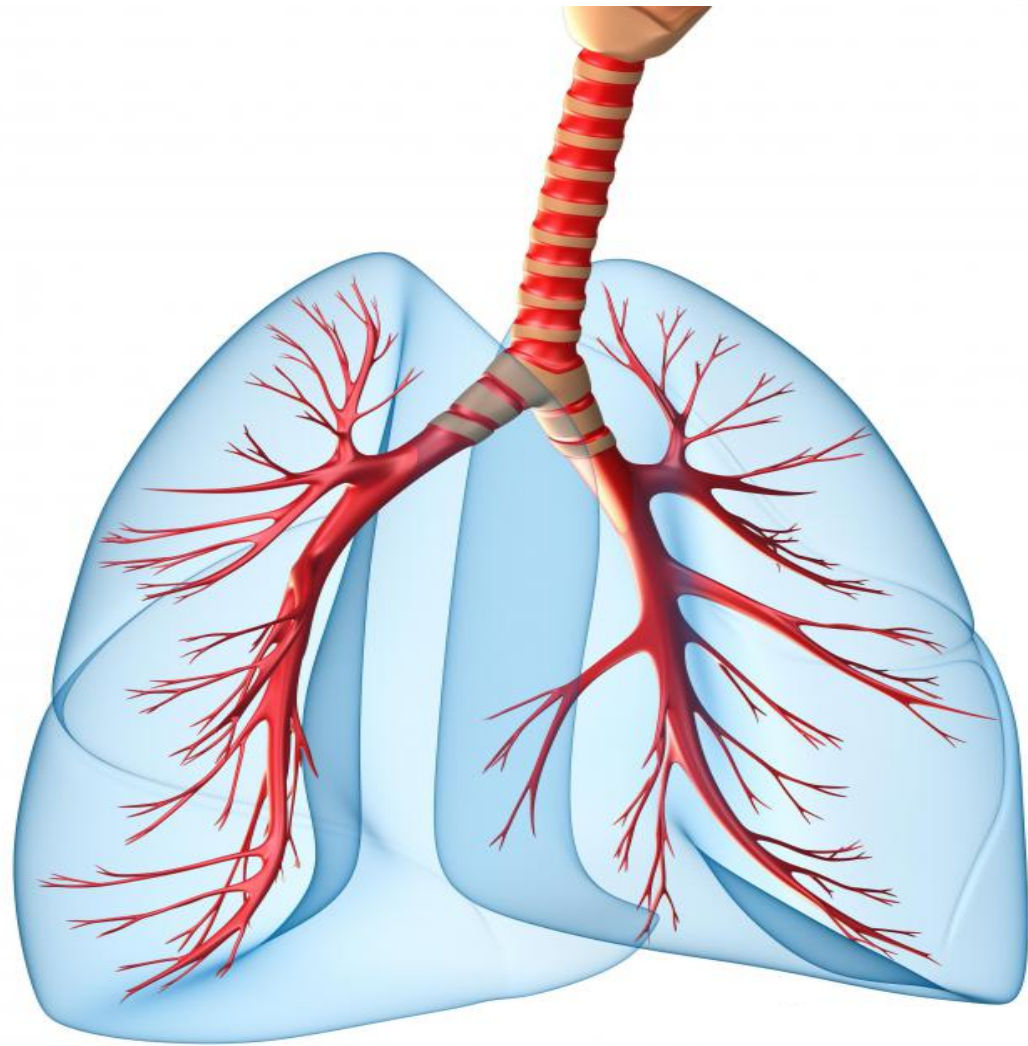
Bridging Cancer Care™
Community Awareness, Prevention and Care

Optimal Care Coordination Model for Medicaid Patients with Lung Cancer

Amanda Kramar

Senior Director, Provider Education
Association of Community Cancer Centers (ACCC)





Lung Cancer is deadly,
with demonstrated
disparities in
outcomes.

Type of insurance is
one such disparity.

Optimal Care
Coordination Model
that reduces
disparities related to
access to care for
lung cancer patients
on Medicaid.



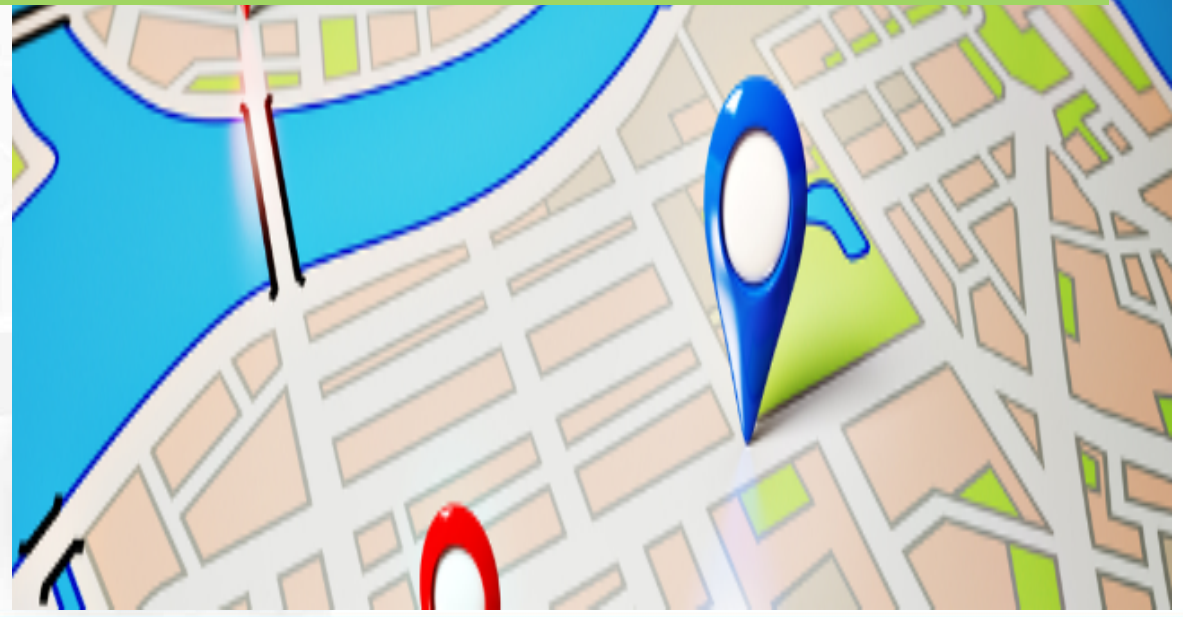
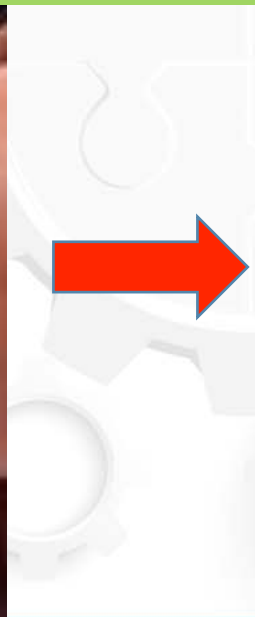


- Advisory Committee
 - Environmental Scan
 - Communication Strategy



Where along the care continuum do we want to focus the project?

- Finalize selection criteria
 - Open application period
 - Select 5 development sites/systems



Advisory Committee

<p>Christopher S. Lathan, MD, MS, MPH (Co-Chair) Faculty Director for Cancer Care Equity Dana-Farber Cancer Institute</p>	<p>Randall A. Oyer, MD (Co-Chair) Medical Director Lancaster General Health</p>
<p>Thomas Asfeldt, RN, BAN, MBA Director, Sanford Medical Center, Outpatient Cancer Services & Radiation Oncology Sanford Health</p>	<p>John V. Cox, DO, MBA, FACP, FASCO Professor of Internal Medicine Medical Director of Oncology Services UT Southwestern Medical Center</p>
<p>Andrea Ferris President and Chairman of the Board LUNGeivity Foundation</p>	<p>Lovell A. Jones, PhD Professor & Associate Dean for Research Prairie View A&M University College of Nursing</p>
<p>Matthew J. Loscalzo, LCSW Professor and Executive Director, Supportive Care City of Hope – National Medical Center</p>	<p>James L. Mulshine, MD Vice President, Rush University Medical Center Acting Head, Rush Cancer Program Rush University</p>

Advisory Committee – Cont.

<p>Kathleen Nolan Managing Principal Health Management Associates</p>	<p>Shawn M. Regis, PhD Patient Navigator; Associate Research Scientist Lahey Hospital & Medical Center</p>
<p>Maureen M. Rigney, MSW Director of Community and Support Services Lung Cancer Alliance</p>	<p>Cardinale B. Smith, MD, MSCR Assistant Professor Division of Hematology/Medical Oncology Mount Sinai School of Medicine</p>
<p>Becky DeKay, MBA <i>ACCC Education Committee Chair & Past President (2014-2015)</i> Executive Director, Oncology Service Line Feist-Weiller Cancer Center University Health - Shreveport</p>	<p>Mark S. Soberman, MD, MBA, FACS <i>ACCC President-Elect (2016-2017)</i> Medical Director, Oncology Service Line Thoracic Surgeon, Center for Chest Disease Frederick Regional Health System</p>

ACCC Staff Team



Christian Downs
Executive Director



Sandra Vassos
Chief Development Officer



Amanda Kramar
*Senior Director,
Provider Education*



Marianne Gandee
*Assistant Director,
Provider Education*