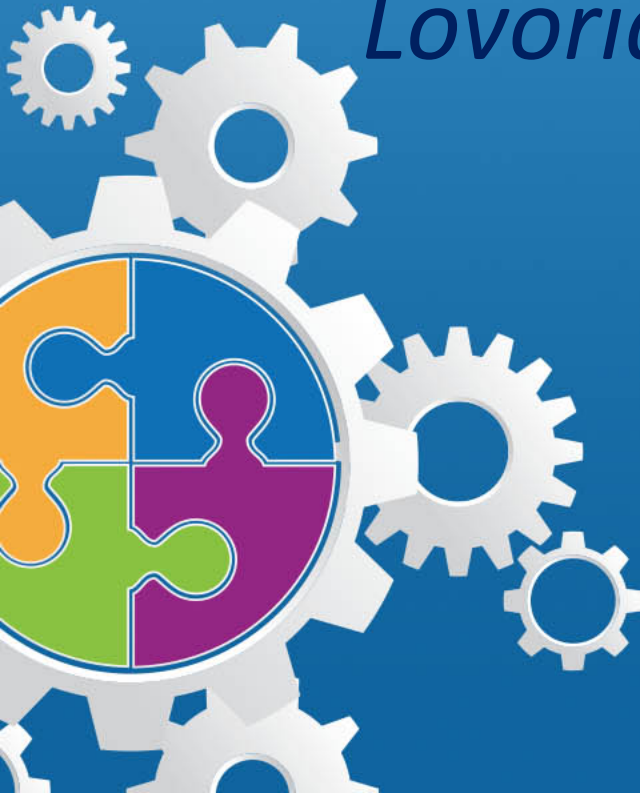


c-CARE

cancer-Community Awareness Access Research & Education

Augusta University formerly Georgia Regents University

Lovoria B. Williams, PhD, APRN-BC, FAANP



The Need for c-CARE

- Lung cancer mortality
- Higher mortality among African Americans
- Lung cancer screening recommendation
- Slower screening adoption among the medically underserved



American Cancer Society, 2016; Baggett et al., 2015

Target Population

- **Minority; medically underserved**
- **Age 21-80 years**
- **English speaking**
- **Smokers and non-smokers**



c|CARE

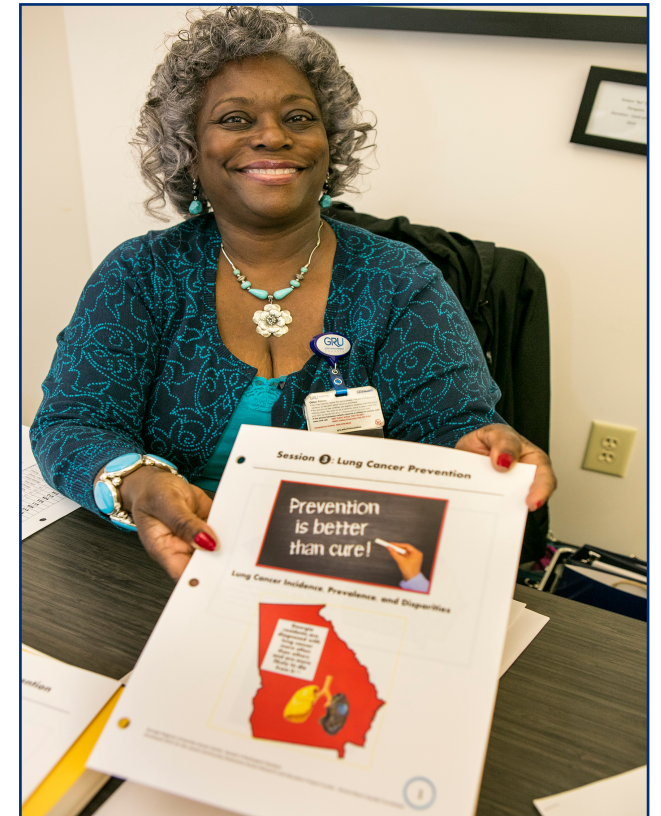
Project Goals and Objectives

- **Decrease lung cancer mortality**
- **Increase participants'**
 - awareness of cancer risk factors
 - early detection behaviors
 - knowledge of lung cancer screening recommendation
- **Navigate to lung cancer screening and tobacco cessation services**



The Intervention

- Evidenced-based curriculum
- Community Health Workers
- Four weekly 90 minute classes
- Navigation to services



Partners

- **12 Community Sites**
 - **7 African-American Churches**
 - **4 clinics**
 - **Salvation Army Kroc Center**



Module Components

- Education
- Community resources
- Nurse navigation
- Social media campaign
- Community outreach
- Policy implementation



Progress to Date

- **5 of 12 sites complete**
- **28 Community Health Workers trained**
- **218 participants enrolled**
- **60% of eligible have undergone screening**
- **45% of smokers have enrolled in cessation**

Lessons Learned

- Team presence in clinic sites
- Health professional required
- Site readiness assessment



c|CARE

Key Next Steps

- **Community Health Workers Training**
- **Recruitment at Salvation Army Kroc Center**
- **Annual Community Health Workers Forum**
- **Coordination of Cohort Three sites**
- **Collaboration with GA Dept. of Public Health**



Wild Card

- The worth of a picture





c | CARE