

PRODUCT MONOGRAPH
INCLUDING PATIENT MEDICATION INFORMATION

^{Pr}**REYATAZ**[®]

atazanavir capsules
capsule, 200 mg, 300 mg atazanavir (as atazanavir sulfate), oral

Aza peptide Inhibitor of HIV-1 Protease

Bristol-Myers Squibb Canada
Montreal, Canada

Date of Initial Authorization:
Dec 03, 2003

Date of Revision:
OCT 23, 2024

[®]Registered trademark of Bristol-Myers Squibb Holdings Ireland used under licence by Bristol-Myers Squibb Canada

Submission Control Number: 287317

RECENT MAJOR LABEL CHANGES

1 Indications	08/2023
2 Contraindications	08/2023, 06/2024, 08/2024
4 Dosage and Administration, 4.2 Recommended Dose and Dosage Adjustment	08/2023
7 Warnings and Precautions, General	06/2024

TABLE OF CONTENTS

Sections or subsections that are not applicable at the time of authorization are not listed.

RECENT MAJOR LABEL CHANGES	2
TABLE OF CONTENTS	2
PART I: HEALTH PROFESSIONAL INFORMATION.....	4
1 INDICATIONS.....	4
1.1 Pediatrics.....	4
1.2 Geriatrics	4
2 CONTRAINDICATIONS	4
4 DOSAGE AND ADMINISTRATION	6
4.1 Dosing Considerations.....	6
4.2 Recommended Dose and Dosage Adjustment	7
4.4 Administration.....	9
4.5 Missed Dose	9
5 OVERDOSAGE.....	9
6 DOSAGE FORMS, STRENGTHS, COMPOSITION AND PACKAGING	9
7 WARNINGS AND PRECAUTIONS	10
7.1 Special Populations	15
7.1.1 Pregnant Women	15
7.1.2 Breast-feeding	15
7.1.3 Pediatrics	16
7.1.4 Geriatrics	16
8 ADVERSE REACTIONS	16
8.1 Adverse Reaction Overview.....	16
8.2 Clinical Trial Adverse Reactions	16

8.2.1 Clinical Trial Adverse Reactions – Pediatrics.....	20
8.3 Less Common Clinical Trial Adverse Reactions	21
8.4 Abnormal Laboratory Findings: Hematologic, Clinical Chemistry and Other Quantitative Data	21
8.5 Post-Market Adverse Reactions	27
9 DRUG INTERACTIONS	28
9.1 Serious Drug Interactions	28
9.2 Drug Interactions Overview.....	28
9.4 Drug-Drug Interactions.....	29
9.5 Drug-Food Interactions	55
9.6 Drug-Herb Interactions.....	55
10 CLINICAL PHARMACOLOGY	55
10.1 Mechanism of Action.....	55
10.2 Pharmacodynamics	55
10.3 Pharmacokinetics	56
11 STORAGE, STABILITY AND DISPOSAL	60
12 SPECIAL HANDLING INSTRUCTIONS.....	60
PART II: SCIENTIFIC INFORMATION	61
13 PHARMACEUTICAL INFORMATION.....	61
14 CLINICAL TRIALS	61
14.1 Clinical Trials by Indication	61
15 MICROBIOLOGY	71
16 NON-CLINICAL TOXICOLOGY	74
PATIENT MEDICATION INFORMATION.....	77

PART I: HEALTH PROFESSIONAL INFORMATION

1 INDICATIONS

REYATAZ (atazanavir sulfate) is indicated in combination with other antiretroviral agents for the treatment of human immunodeficiency virus-1 (HIV-1) infection in adults and pediatric patients 6 years of age and older weighing at least 20 kg.

This indication is based on analyses of plasma HIV-1 RNA levels and CD4 cell counts from controlled studies of 96 weeks duration in antiretroviral-naïve patients and 48 weeks duration in antiretroviral-treatment-experienced patients.

In antiretroviral-treatment-experienced patients with prior virologic failure, co-administration of REYATAZ/ritonavir is recommended (see [14 CLINICAL TRIALS](#)).

The number of baseline primary protease inhibitor mutations affects the virologic response to REYATAZ/ritonavir (see [15 MICROBIOLOGY- Resistance](#)).

(See, [4 DOSAGE AND ADMINISTRATION](#), [7 WARNINGS AND PRECAUTIONS](#), [15 MICROBIOLOGY- Resistance](#)).

1.1 Pediatrics

Pediatrics (from 6 to <18 years of age and weighing at least 20 kg): Based on the data submitted and reviewed by Health Canada, the safety and efficacy of REYATAZ in pediatric patients have been established. Therefore, Health Canada has authorized an indication for pediatric use (see [7.1.3 Pediatrics](#), [14 CLINICAL TRIALS](#)).

Dosage is based on body weight not to exceed the adult dose (see [4 DOSAGE AND ADMINISTRATION](#)). There are no dosing recommendations for pediatric patients less than 6 years of age.

1.2 Geriatrics

Geriatrics (≥ 65 years of age): Clinical studies of REYATAZ did not include sufficient numbers of patients aged 65 and over to determine whether they respond differently from younger patients. In general, dose selection for an elderly patient should reflect the greater frequency of decreased hepatic, renal, or cardiac function, and of concomitant disease or other drug therapy.

2 CONTRAINDICATIONS

Patients with previously demonstrated clinically significant hypersensitivity (e.g., Stevens-Johnson syndrome, erythema multiforme, or toxic skin eruptions) to any component of the product or container, including atazanavir. For a complete listing see [6 DOSAGE FORMS, STRENGTHS, COMPOSITION AND PACKAGING](#).

Coadministration of REYATAZ is contraindicated with drugs that are highly dependent on CYP3A4 and/or UGT1A for clearance and for which elevated plasma concentrations are associated with serious and/or life-threatening events, and with drugs that are strong inducers of CYP3A due to the potential for loss of therapeutic effect and development of possible resistance. Therefore, coadministration is

contraindicated with drugs listed in **Table 1**. **Table 1** includes, but is not limited to, a list of drugs within a class for which co-administration with REYATAZ is CONTRAINDICATED.

Table 1 Drugs that are Contraindicated with REYATAZ^a	
Drug Class	Drugs within class that are contraindicated with REYATAZ
Alpha 1-Adrenoreceptor Antagonists	alfuzosin
Antianginals	ranolazine (when used with ritonavir)
Antiarrhythmics	amiodarone (when used with ritonavir), dronedarone (when used with ritonavir) flecainide (when used with ritonavir), propafenone (when used with ritonavir), quinidine
Anticoagulants: Direct-acting oral anticoagulants (DOACs)	apixaban, rivaroxaban (when used with ritonavir) ^b
Anticonvulsants	carbamazepine, phenobarbital, phenytoin
Antigout	colchicine (when used with ritonavir)

Antimycobacterials	rifampin
Antineoplastics	apalutamide, encorafenib, irinotecan, neratinib (when used with ritonavir), venetoclax (when used with ritonavir).
Antiplatelets	ticagrelor
Antipsychotics	lurasidone (when used with ritonavir), pimozide
Benzodiazepines	triazolam
Long-Acting Beta Andrenoreceptor	salmeterol (when used with ritonavir)
Ergot Derivatives	dihydroergotamine, ergotamine, ergonovine, methylethylergonovine
Hepatitis C Direct-Acting Antivirals	glecaprevir/pibrentasvir
Herbal Products	St. John's wort (<i>Hypericum perforatum</i>)
Lipid-Modifying Agents: HMG-CoA Reductase Inhibitors Other Lipid-Modifying agents:	lovastatin, simvastatin lomitapide
Phosphodiesterase Type 5 (PDE5) Inhibitors	sildenafil ^c (when used for the treatment of pulmonary arterial hypertension [PAH]), vardenafil (when used for the treatment of erectile dysfunction)
Non-nucleoside Reverse Transcriptase Inhibitors	nevirapine

^a See Table 15 for more detailed information.

^b See Table 15 for apixaban and rivaroxaban when co-administered with REYATAZ without ritonavir

^c See Table 15 for sildenafil when dosed for erectile dysfunction.

4 DOSAGE AND ADMINISTRATION

4.1 Dosing Considerations

Concomitant Therapy: (see [7 WARNINGS AND PRECAUTIONS](#), [9 DRUG INTERACTIONS](#) and [10 CLINICAL PHARMACOLOGY](#)).

Ritonavir: Efficacy and safety of REYATAZ with ritonavir in doses greater than 100 mg once daily have not been established. The use of higher ritonavir doses might alter the safety profile of atazanavir (cardiac effects, hyperbilirubinemia) and, therefore, is not recommended.

There are limited safety data from controlled trials for REYATAZ plus ritonavir regimens without tenofovir DF (see [7 WARNINGS AND PRECAUTIONS](#) and [9 DRUG INTERACTIONS](#)).

Efavirenz - Therapy- Naive Patients:

If REYATAZ is combined with efavirenz, REYATAZ 400 mg (two 200 mg capsules) with ritonavir 100 mg should be administered once daily all as a single dose with food, and efavirenz should be administered on an empty stomach, preferably at bedtime.

Efavirenz - Therapy-Experienced Patients:

Do not co-administer REYATAZ with efavirenz in treatment-experienced patients due to decreased atazanavir exposure.

Didanosine: When co-administered with didanosine buffered formulations, REYATAZ should be given (with food) two hours before or one hour after didanosine.

Tenofovir disoproxil fumarate (DF): If co-administered with tenofovir DF, it is recommended that 300 mg of REYATAZ and ritonavir 100 mg be given with tenofovir DF 300 mg (together as single daily doses with food). There are limited safety data from controlled trials for REYATAZ plus ritonavir regimens without tenofovir DF. REYATAZ without ritonavir should not be co-administered with tenofovir DF (see [7 WARNINGS AND PRECAUTIONS](#) and [9 DRUG INTERACTIONS](#)).

4.2 Recommended Dose and Dosage Adjustment

Recommended Adult Dose

Therapy-Naive Patients

- REYATAZ 300 mg once daily taken with ritonavir 100 mg once daily taken with food.
- OR
- REYATAZ 400 mg (two 200 mg capsules) once daily (without ritonavir) taken with food, for patients who are unable to tolerate ritonavir.

Therapy-Experienced Patients

- REYATAZ 300 mg once daily taken with ritonavir 100 mg once daily taken with food.

Recommended Pediatric Dose (from 6 to < 18 years of age)

The recommended dosage of REYATAZ for pediatric patients (6 to less than 18 years of age) is based on body weight as shown below in **Table 2** and should not exceed the recommended adult dosage. REYATAZ Capsules must be taken with food. The data are insufficient to recommend dosing of REYATAZ for any of the following:

- (1) patients less than 6 years of age,
- (2) without ritonavir in patients less than 13 years of age, and
- (3) patients less than 40 kg receiving concomitant tenofovir DF, H₂-receptor antagonists, or proton-pump inhibitors.

Table 2 Dosage for Pediatric Patients (6 to less than 18 years of age) ^a for REYATAZ Capsules with ritonavir
--

Body Weight		REYATAZ dose	ritonavir dose ^b
(kg)	(lbs)	(mg)	(mg)
20 to less than 40	44 to less than 88	200	100
at least 40	at least 88	300	100

^a The REYATAZ and ritonavir dose should be taken once daily with food.

^b Ritonavir capsules, tablets or oral solution.

For treatment-naïve patients at least 13 years of age and at least 40 kg, who are unable to tolerate ritonavir, the recommended dose is REYATAZ 400 mg (without ritonavir) once daily with food. For patients at least 13 years of age and at least 40 kg receiving concomitant tenofovir DF, H₂-receptor antagonists, or proton-pump inhibitors, REYATAZ should not be administered without ritonavir.

Dose Adjustments:

Patients with Renal Impairment

For patients with renal impairment, including those with severe renal impairment who are not managed with hemodialysis, no dose adjustment is required for REYATAZ. Treatment-naïve patients with end stage renal disease managed with hemodialysis should receive REYATAZ 300 mg with ritonavir 100 mg. REYATAZ, with or without ritonavir, should not be used in antiretroviral-treatment-experienced patients with end stage renal disease managed with hemodialysis. REYATAZ without ritonavir should not be administered to treatment-naïve patients managed with hemodialysis (see [7 WARNINGS AND PRECAUTIONS](#), Renal and [10.3 Pharmacokinetics](#), Special Populations and Conditions).

Patients with Hepatic Impairment

REYATAZ should be used with caution in patients with mild-to-moderate hepatic impairment.

For patients with moderate hepatic impairment (Child-Pugh Class B) who have not experienced prior virologic failure, a dose reduction to 300 mg once daily should be considered. REYATAZ should not be used in patients with severe hepatic impairment (Child-Pugh Class C). REYATAZ/ritonavir has not been studied in subjects with hepatic impairment and is not recommended (see [7 WARNINGS AND PRECAUTIONS](#), Hepatic/Biliary/Pancreatic and [10.3 Pharmacokinetics](#), Special Populations and Conditions).

Pregnant Women

REYATAZ should not be administered without ritonavir.

During pregnancy:

For pregnant patients, no dose adjustment is required based on a PK study: REYATAZ 300 mg with ritonavir 100 mg (see Pregnancy under [10 CLINICAL PHARMACOLOGY](#) and [14 CLINICAL TRIALS](#) sections) with the following exception:

For treatment-experienced pregnant women during the second or third trimester, when REYATAZ is co-administered with either an H₂-receptor antagonist or tenofovir DF, REYATAZ 400 mg with ritonavir 100 mg once daily is recommended. There are insufficient data to recommend a REYATAZ dose for use

with both an H2-receptor antagonist and tenofovir DF in treatment-experienced women.

During postpartum:

No dose adjustment is required for postpartum patients. However, patients should be closely monitored for adverse events because atazanavir exposures could be higher during the first 2 months after delivery.

4.4 Administration

Capsules should not be opened; they should be swallowed whole with water.

4.5 Missed Dose

If a dose of REYATAZ is missed, patients should take the dose as soon as possible and then return to their normal schedule. However, if a dose is skipped, the patient should not double the next dose.

5 OVERDOSAGE

For management of a suspected drug overdose, contact your regional poison control centre.

Administration of activated charcoal may be used to aid in removal of unabsorbed drug. Treatment of overdose with atazanavir should consist of general supportive measures, including monitoring of vital signs and ECG, and observations of the patient's clinical status. There is no specific antidote for overdose with atazanavir. Since atazanavir is extensively metabolized by the liver and is highly protein bound, dialysis is unlikely to be beneficial in significant removal of this medicine.

Human experience of acute overdose with atazanavir is limited. Single doses up to 1200 mg have been taken by healthy volunteers without symptomatic untoward effects. A single self-administered overdose of 58.4 g of atazanavir in an HIV-infected patient (146 times the 400 mg recommended dose) was associated with asymptomatic bilateral bundle branch block and PR interval prolongation. These events resolved spontaneously. At high doses that lead to high drug exposures, jaundice due to indirect (unconjugated) hyperbilirubinemia (without associated liver function test changes) or cardiac conduction abnormalities, including PR and/or QT interval prolongations, may be observed (see [7 WARNINGS AND PRECAUTIONS](#), Cardiovascular, and [10.2 Pharmacodynamics](#), Electrocardiogram: Effect on PR and QT intervals).

6 DOSAGE FORMS, STRENGTHS, COMPOSITION AND PACKAGING

REYATAZ (atazanavir sulfate) Capsules are available for oral administration in strengths containing atazanavir sulfate equivalent to 200 mg or 300 mg.

Table 3 Dosage Forms, Strengths, Composition and Packaging

Route of Administration	Dosage Form / Strength	Clinically Relevant Non-medicinal Ingredients
Oral	Capsules, 200 and 300 mg atazanavir	<p>Inactive ingredients: crospovidone, lactose monohydrate, and magnesium stearate.</p> <p>The capsule shells contain the following inactive ingredients: gelatine, FD&C Blue #2, and titanium dioxide (for both strengths), black iron oxide, red iron oxide and yellow iron oxide (300 mg only). REYATAZ capsules are supplied in HDPE bottles containing 60 capsules (200 mg) and 30 capsules (300 mg).</p>

200 mg capsule

Blue opaque cap and body, hard gelatine capsule printed in white with “BMS”, “200 mg”, and “3631”.

300 mg capsule

Red opaque cap and blue opaque body, hard gelatine capsule printed in white with “BMS”, “300 mg”, and “3622”.

7 WARNINGS AND PRECAUTIONS**General**

Atazanavir should always be used in combination with other antiretroviral agents. Atazanavir should not be added as a single agent when antiretrovirals are changed due to loss of virologic response.

Drug Interactions

Co-administration of REYATAZ and drugs primarily metabolized by CYP3A4 may result in increased plasma concentrations of the other drug with the potential for increased toxicity (see [9 DRUG INTERACTIONS](#)).

Due to inhibition of CYP3A4 by REYATAZ, co-administration of REYATAZ with quetiapine may result in increased quetiapine concentrations. Serious and/or life-threatening quetiapine-related adverse reactions, including severe sedation and coma, have been reported for concomitant use of HIV protease inhibitors and quetiapine. REYATAZ should not be used in combination with quetiapine. If co-administration is necessary, reduce the quetiapine dose and monitor for quetiapine-associated adverse reactions as recommended in the quetiapine product monograph (see [9 DRUG INTERACTIONS](#)).

Antiretroviral Treatment-Experienced Patients

Atazanavir 400 mg once daily has been shown to be inferior to lopinavir/ritonavir in antiretroviral experienced patients. There are limited safety data from controlled trials for REYATAZ plus ritonavir regimens without tenofovir DF (see [4 DOSAGE AND ADMINISTRATION](#), [9 DRUG INTERACTIONS](#), and [14 CLINICAL TRIALS](#)).

Carcinogenesis and Mutagenesis

The incidence of benign hepatocellular adenomas was increased in high-dose female mice at systemic exposures approximately 7-fold higher than those in humans at the recommended 400 mg clinical dose. There was no increase in the incidence of tumors in male mice or in male or female rats at any dose tested. The clinical significance of the carcinogenic findings in female mice is unknown as the benign hepatic tumors occurred only at doses that induced liver toxicity (see [16 NON-CLINICAL TOXICOLOGY](#) - Carcinogenicity).

Cardiovascular

Cardiac Conduction Abnormalities: Atazanavir has been shown to prolong the PR interval of the electrocardiogram in some patients. In healthy volunteers and in patients, abnormalities in atrioventricular (AV) conduction were asymptomatic and limited to first degree AV block with some exceptions (see [5 OVERDOSAGE](#)). There have been post-marketing reports of second-degree AV block, third-degree AV block, QTc prolongation, Torsades de Pointes and other conduction abnormalities in patients treated with REYATAZ (see [8.5 Post-Market Adverse Reactions](#)). In clinical trials, asymptomatic first-degree AV block was observed in 5.9 % of atazanavir-treated patients (n = 920), 3.0 % of efavirenz treated patients (n = 329), 5.2 % of lopinavir/ritonavir treated patients (n = 252) and 10.4 % of nelfinavir treated patients (n = 48). In study AI424-045 asymptomatic first-degree AV block was observed in 5 % (6/118) of REYATAZ/ritonavir-treated patients and 5 % (6/116) of lopinavir/ritonavir-treated patients who had on-study electrocardiogram measurements. Because of limited clinical experience, atazanavir should be used with caution in patients with pre-existing conduction system disease (e.g., marked first-degree AV block or second or third-degree AV block).

Dose -related asymptomatic prolongations in PR interval with REYATAZ have been observed in clinical studies. Caution should be used with medicinal products known to induce PR prolongations (e.g., atenolol, diltiazem). In patients with pre-existing conduction problems (second degree or higher atrioventricular or complex bundle-branch block), REYATAZ should be used with caution and only if the benefits exceed the risk. Particular caution should be used when prescribing REYATAZ in association with medicinal products which have the potential to increase the QT interval and/or in patients with pre-existing risk factors (bradycardia, long congenital QT, electrolyte imbalances) (see [10 CLINICAL PHARMACOLOGY](#)).

Pharmacokinetic studies between atazanavir and other drugs that prolong the PR interval including beta blockers (other than atenolol), verapamil and digoxin have not been performed. An additive effect of atazanavir and these drugs cannot be excluded; therefore, caution should be exercised when atazanavir is given concurrently with these drugs, especially those that are metabolized by CYP3A4 (e.g., verapamil) (see [9 DRUG INTERACTIONS](#)).

Endocrine and Metabolism

Diabetes mellitus/Hyperglycemia: New-onset diabetes mellitus, exacerbation of pre-existing diabetes mellitus, and hyperglycemia have been reported during post-marketing surveillance in HIV-infected patients receiving protease inhibitor therapy. Some patients required either initiation or dose adjustments of insulin or oral hypoglycemic agents for treatment of these events. In some cases, diabetic ketoacidosis has occurred. In those patients who discontinued protease inhibitor therapy, hyperglycemia

persisted in some cases. Because these events have been reported voluntarily during clinical practice, estimates of frequency cannot be made and a causal relationship between protease inhibitor therapy and these events has not been established.

Fat Redistribution: Redistribution/accumulation of body fat including central obesity, dorsocervical fat enlargement (buffalo hump), peripheral wasting, facial wasting, breast enlargement, and "cushingoid appearance" have been observed in patients receiving antiretroviral therapy. The mechanism and long-term consequences of these events are currently unknown. A causal relationship has not been established.

Lactose: Patients with rare hereditary problems of galactose intolerance, the Lapp lactase deficiency or glucose-galactose malabsorption should not take this medicinal product.

Hematologic

Hemophilia: There have been reports of increased bleeding, including spontaneous skin hematomas and hemarthrosis, in patients with hemophilia type A and B treated with protease inhibitors. In some patients additional factor VIII was given. In more than half of the reported cases, treatment with protease inhibitors was continued or reintroduced. A causal relationship between protease inhibitor therapy and these events has not been established.

Hepatic/Biliary/Pancreatic

Hepatic Impairment and Toxicity: REYATAZ is principally metabolized by the liver; caution should be exercised when administering this drug to patients with hepatic impairment because atazanavir concentrations may be increased (see [4 DOSAGE AND ADMINISTRATION](#)). Patients with underlying hepatitis B or C viral infections or marked elevations in transaminases prior to treatment may be at increased risk for developing further transaminase elevations or hepatic decompensation. In these patients, test for liver enzymes before initiating therapy with REYATAZ and monitor liver enzymes during treatment. REYATAZ should not be administered to patients with severe hepatic impairment. REYATAZ/ritonavir is not recommended for use in patients with hepatic impairment.

Hyperbilirubinemia: Most patients taking atazanavir experience elevations in indirect (unconjugated) bilirubin related to inhibition of UDP-glucuronosyl transferase (UGT). This hyperbilirubinemia is generally reversible upon discontinuation of REYATAZ. If hepatic transaminase elevations occur with hyperbilirubinemia while a patient is receiving atazanavir, consideration should be given to also evaluating alternative etiologies. No long-term safety data are available for patients experiencing persistent elevations in total bilirubin > 5 x ULN. Alternative antiretroviral therapy to REYATAZ may be considered if jaundice or scleral icterus associated with bilirubin elevations present cosmetic concerns for patients. Dose reduction of atazanavir is not recommended since long-term efficacy of reduced doses has not been established (see [8 ADVERSE REACTIONS](#)).

Cholelithiasis, Cholecystitis, and Cholestasis: There have been post-marketing reports of cholelithiasis, cholecystitis, and cholestasis in patients treated with atazanavir with ritonavir as part of their ART regimen (see [8.5 Post-Market Adverse Reactions](#)).

Immune

Immune Reconstitution Inflammatory Syndrome: Immune reconstitution inflammatory syndrome has

been reported in patients treated with combination antiretroviral therapy, including REYATAZ. During the initial phase of treatment, a patient whose immune system responds to therapy may develop an inflammatory response to indolent or residual opportunistic infections (such as MAC, CMV, PCP and TB), which may necessitate further evaluation and treatment.

Autoimmune disorders (such as Graves' disease) have also been reported to occur in the setting of immune reactivation; however, the reported time to onset is more variable and these events can occur many months after initiation of treatment.

Angioedema: Cases of angioedema have been reported in patients taking atazanavir (see [8.5 Post-market Adverse Reactions](#)).

Renal

Renal Impairment: In healthy subjects, approximately 7 % of the dose of atazanavir is eliminated unchanged in the urine. REYATAZ has been studied in adult subjects with severe renal impairment (n = 20), including those on hemodialysis, at multiple doses of 400 mg once daily. The impact of renal impairment on atazanavir elimination for patients without hemodialysis is anticipated to be low. Moderate increases in atazanavir clearance and decreased exposure levels were seen in patients managed with hemodialysis. REYATAZ should not be administered to HIV-treatment-experienced patients with end stage renal disease managed with hemodialysis (see [4 DOSAGE AND ADMINISTRATION](#) and [10 CLINICAL PHARMACOLOGY](#)).

Chronic kidney disease: Chronic kidney disease (CKD) has been reported in patients treated with atazanavir, with or without ritonavir, during post-marketing surveillance. Some resulted in fatal outcomes in patients with pre-existing CKD, and some resulted in the need for hemodialysis in patients with or without pre-existing CKD. REYATAZ should be used with caution, particularly in those patients with other risk factors for chronic kidney disease. Prescribers should consider the risk-benefit in continuing REYATAZ therapy if patients develop signs and symptoms of CKD.

Nephrolithiasis and Cholelithiasis: Cases of nephrolithiasis and/or cholelithiasis were reported during post-marketing surveillance in HIV-infected patients receiving atazanavir therapy. Some patients required hospitalization for additional management, and some had complications. Because these events were reported voluntarily during clinical practice, estimates of frequency cannot be made. If signs or symptoms of nephrolithiasis and/or cholelithiasis occur, temporary interruption or discontinuation of therapy may be considered.

Reproductive Health: Female and Male Potential

Fertility

In a fertility and early embryonic development study in rats, atazanavir altered estrus cycling with no effects on mating, fertility, or early embryonic development. Systemic drug exposure levels were equal (in male rats) or two times (in female rats) those at the human clinical dose (400 mg/day).

Sensitivity/Resistance

Resistance

In vitro HIV-1 isolates with a decreased susceptibility to ATV have been selected *in vitro* and obtained

from patients treated with ATV or atazanavir/ritonavir (ATV/RTV). HIV-1 isolates that were 93- to 183-fold resistant to ATV from three different viral strains were selected *in vitro* by 5 months. The mutations in these HIV-1 viruses that contributed to ATV resistance included I50L, N88S, I84V, A71V, and M46I. Changes were also observed at the protease cleavage sites following drug selection. Recombinant viruses containing the I50L mutation were growth impaired and displayed increased *in vitro* susceptibility to other protease inhibitors (PIs) (amprenavir, lopinavir, nelfinavir, ritonavir, and saquinavir). The I50L and I50V substitutions yielded selective resistance to ATV and amprenavir, respectively, and did not appear to be cross-resistant.

Both genotypic and phenotypic resistances have developed during clinical studies (see [15 MICROBIOLOGY, Resistance](#)).

Cross Resistance

Cross-resistance among PIs has been observed. Baseline phenotypic and genotypic analyses of clinical isolates from ATV clinical trials of PI-experienced subjects showed that isolates cross-resistant to multiple PIs were cross-resistant to ATV. Greater than 90 % of the isolates with mutations that included I84V or G48V were resistant to ATV. Greater than 60 % of isolates containing L90M, G73S/T/C, A71V/T, I54V, M46I/L, or a change at V82 were resistant to ATV, and 38 % of isolates containing a D30N mutation in addition to other changes were resistant to ATV. Isolates resistant to ATV were also cross-resistant to other PIs with > 90 % of the isolates resistant to lopinavir, nelfinavir, ritonavir, and saquinavir, and 80 % resistant to amprenavir. In treatment-experienced patients, PI-resistant viral isolates that developed the I50L mutation in addition to other PI resistance-associated mutations were also cross-resistant to other PIs.

Genotypic and/or phenotypic analysis of baseline virus may aid in determining ATV susceptibility before initiation of ATV/RTV therapy.

Overall, both the number and type of baseline PI mutations affected response rates in treatment-experienced patients (see [15 MICROBIOLOGY, Cross-Resistance](#)).

Skin

Rash: In controlled clinical trials, rash (all grades, regardless of causality) occurred in approximately 20 % of patients treated with REYATAZ. The median time to onset of rash in clinical studies was 7.3 weeks and the median duration of rash was 1.4 weeks. Rashes were generally mild-to-moderate maculopapular skin eruptions. Treatment-emergent adverse reactions of moderate or severe rash (occurring at a rate of ≥ 2 %) are presented for the individual clinical studies (see [8 ADVERSE REACTIONS](#)). Dosing with REYATAZ was often continued without interruption in patients who developed rash. The discontinuation rate for rash in clinical trials was < 1%. REYATAZ should be discontinued if severe rash develops. Cases of Stevens-Johnson syndrome, erythema multiforme and toxic skin eruptions including drug rash, eosinophilia, and systemic symptoms (DRESS) syndrome have been reported in patients receiving REYATAZ (see [2 CONTRAINDICATIONS](#)).

7.1 Special Populations

7.1.1 Pregnant Women

Pregnant Women: REYATAZ should be used during pregnancy only if the potential benefit justifies the potential risk (see [7 WARNINGS AND PRECAUTIONS](#), Endocrine and Metabolism). There are no adequate and well-controlled studies in pregnant women. Cases of lactic acidosis, sometimes fatal, and symptomatic hyperlactatemia have been reported in patients (including pregnant women) receiving REYATAZ in combination with nucleoside analogues, which are known to be associated with increased risk of lactic acidosis. Female gender and obesity are also known risk factors for lactic acidosis syndrome. The contribution of REYATAZ to the risk of development of lactic acidosis syndrome has not been established.

Hyperbilirubinemia occurred frequently during treatment with REYATAZ. It is not known whether REYATAZ administered to the mother during pregnancy will exacerbate physiologic hyperbilirubinemia and lead to kernicterus in neonates and young infants. In the prepartum period, additional monitoring and alternative therapy should be considered. REYATAZ has been shown to cross the placenta.

In the pre-and post-natal development assessment in rats, atazanavir produced a transient reduction in body weight in the offspring at maternally toxic drug exposure levels two times those at the human clinical dose.

Antiretroviral Pregnancy Registry: To monitor maternal-fetal outcomes of pregnant women exposed to REYATAZ, an Antiretroviral Pregnancy Registry has been established. Physicians are encouraged to register patients by calling 1-800-258-4263.

Antiretroviral Pregnancy Registry Data: As of January 2010, the Antiretroviral Pregnancy Registry (APR) has received prospective reports of 635 exposures to atazanavir-containing regimens (425 exposed in the first trimester and 160 and 50 exposed in second and third trimester respectively. Birth defects occurred in 9 of 393 (2.3 %) live births (first trimester exposure) and 5 of 212 (2.4 %) live births (second/third trimester exposure). There was no association between atazanavir and specific birth defects observed in the APR.

7.1.2 Breast-feeding

Atazanavir has been detected in human milk. No data are available regarding atazanavir effects on milk production.

A study in lactating rats demonstrated that atazanavir is secreted in milk. Because of both the potential for HIV transmission and the potential for serious adverse reactions in nursing infants, mothers should be instructed not to breastfeed if they are receiving REYATAZ.

7.1.3 Pediatrics

The safety, pharmacokinetic profile, and virologic response of REYATAZ were evaluated in pediatric patients in an open-label, multicenter clinical trial PACTG 1020A (see [14 CLINICAL TRIALS](#)). The safety profile in pediatric patients was comparable to that observed in adults (see [8 ADVERSE REACTIONS](#)).

The safety, activity, and pharmacokinetic profiles of REYATAZ in pediatric patients ages 3 months to less than 6 years have not been established.

REYATAZ should not be administered in pediatric patients below the age of 3 months due to the risk of kernicterus.

7.1.4 Geriatrics

Geriatrics (≥ 65 years of age): Clinical studies of REYATAZ did not include sufficient numbers of patients aged 65 and over to determine whether they respond differently from younger patients. In general, appropriate caution should be exercised in the administration and monitoring of REYATAZ in elderly patients reflecting the greater frequency of decreased hepatic, renal, or cardiac function, and of concomitant disease or other drug therapy.

8 ADVERSE REACTIONS

8.1 Adverse Reaction Overview

Because clinical trials are conducted under very specific conditions, the adverse reaction rates observed in clinical trials may not reflect the rates observed in practice and should not be compared to the rates in the clinical trials of another drug. Adverse drug reaction information from clinical trials is useful for identifying drug-related adverse events and for approximate rates.

8.2 Clinical Trial Adverse Reactions

Clinical trials are conducted under very specific conditions. The adverse reaction rates observed in the clinical trials; therefore, may not reflect the rates observed in practice and should not be compared to the rates in the clinical trials of another drug. Adverse reaction information from clinical trials may be useful in identifying and approximating rates of adverse drug reactions in real-world use.

Clinical Trial Experience in Adults

REYATAZ has been evaluated for safety and tolerability in combination therapy with other antiretroviral medications in controlled clinical trials in 1806 adult patients receiving REYATAZ 400 mg once daily (1151 patients, 52 weeks median duration and 152 weeks maximum duration), or REYATAZ 300 mg once daily plus ritonavir 100 mg once daily (655 patients, 96 weeks median duration and 108 weeks maximum duration).

The more frequent adverse events of any severity with at least a possible relationship to regimens containing REYATAZ and one or more NRTIs were nausea (20%), diarrhea (10 %) and jaundice (13 %).

Jaundice was reported within a few days to a few months after the initiation of treatment and resulted

in discontinuation of treatment in < 1% of patients. Discontinuation of treatment due to adverse reactions was 5 % in treatment-naïve patients and 5 % in treatment-experienced patients.

Lipodystrophy, of moderate intensity or greater, was reported in regimens containing REYATAZ and one or more NRTIs as shown in **Table 5** and **Table 6** below (see [7 WARNINGS AND PRECAUTIONS](#)).

Treatment-Emergent Adverse Events in Antiretroviral Treatment-Naïve Patients

Drug-related clinical adverse events of moderate or severe intensity in ≥ 2 % of treatment-naïve patients receiving combination therapy including REYATAZ 300 mg with ritonavir 100 mg and REYATAZ 400 mg (without ritonavir) are presented in **Table 4** and **Table 5**, respectively.

Table 4 Selected Treatment-Emergent Adverse Events^a of Moderate or Severe Intensity Reported in ≥ 2 % of Adult Treatment-Naïve Patients^b, Study AI424-138		
	Phase III Study AI424-138	
	96 weeks^c REYATAZ 300 mg plus ritonavir 100 mg (once daily) and tenofovir DF plus emtricitabine^d N = 441	96 weeks^c lopinavir 400 mg plus ritonavir 100 mg (twice daily) and tenofovir DF plus emtricitabine^d N = 437
Digestive System		
Nausea	4 %	8 %
Jaundice/ scleral icterus	5 %	*
Diarrhea	2 %	12 %
Skin and Appendages		
Rash	3 %	2 %

* None reported in this treatment arm.

^a Includes events of possible, probable, certain, or unknown relationship to treatment regimen.

^b Based on the regimen containing REYATAZ.

^c Median time on therapy.

^d As a fixed-dose combination: 300 mg tenofovir DF, 200 mg emtricitabine once daily.

Table 5 Treatment-Emergent Adverse Events^a of Moderate or Severe Intensity Reported in ≥ 2% of Adult Treatment-Naive Patients^b, Studies AI424-034, AI424-007 and AI424-008				
	Phase III Study AI424-034		Phase II Studies AI424-007, -008	
	64 weeks^c REYATAZ 400 mg once daily + lamivudine + zidovudine^e N = 404	64 weeks^c efavirenz 600 mg once daily + lamivudine + zidovudine^e N = 401	120 weeks^{c,d} REYATAZ 400 mg once daily + stavudine / lamivudine or + stavudine / didanosine N = 279	73 weeks^{c,d} nelfinavir 750 mg TID or 1250 mg BID + stavudine + lamivudine or + stavudine + didanosine N = 191
Body as a Whole				
Headache	6 %	6 %	1 %	2 %
Digestive System				
Diarrhea	1 %	2 %	3 %	16 %
Dyspepsia	2 %	2 %	< 1 %	< 1 %
Scleral icterus	2 %	*	2 %	*
Jaundice	5 %	*	5 %	*
Nausea	14 %	12 %	6 %	4 %
Abdominal pain	4 %	4 %	4 %	2 %
Vomiting	4 %	7 %	3 %	3 %
Metabolic and Nutritional System				
Lipodystrophy	1 %	1 %	7 %	3 %
Nervous System				
Insomnia	3 %	3 %	< 1 %	*
Dizziness	2 %	7 %	< 1 %	*
Peripheral neurologic symptoms	< 1 %	1 %	4 %	3 %
Skin and Appendages				
Rash	7 %	10 %	5 %	1 %

* Not reported in this treatment arm.

^a Includes adverse events of possible, probable, certain, or unknown relationship to treatment regimen. Assessments of relationship refer to regimens containing REYATAZ or comparator.

^b Based on regimen(s) containing REYATAZ.

^c Median time on therapy. In study AI424-034 efficacy analyses are based on 48-week data. Safety data are derived from a 64-week safety update report.

^d Includes long-term follow-up.

^e As a fixed dose combination: 150 mg lamivudine, 300 mg zidovudine twice daily.

Treatment-Emergent Adverse Events in Antiretroviral Treatment-Experienced Patients

Drug related clinical adverse events of moderate or severe intensity in ≥ 2 % of treatment-experienced

patients receiving combination therapy including REYATAZ are presented in **Table 6**.

Table 6 Treatment-Emergent Adverse Events^a of Moderate or Severe Intensity Reported in ≥ 2 % of Adult Treatment-Experienced Patients^b, Studies AI424-043 and AI424-045				
	Phase III Study AI424-043		Phase III Study AI424-045**	
	48 weeks^c REYATAZ 400 mg once daily + 2 NRTIs N = 144	48 Weeks^c lopinavir + ritonavir (400/100 mg) BID^d + 2 NRTIs N = 146	48 weeks^c REYATAZ 300 mg once daily + ritonavir 100 mg once daily + tenofovir DF + NRTI N = 119	48 weeks^c lopinavir + ritonavir (400/100 mg) BID^d + tenofovir DF + NRTI N = 118
Body as a Whole				
Headache	4 %	3 %	< 1 %	< 1 %
Fever	-	-	2 %	*
Digestive System				
Diarrhea	2 %	4 %	3 %	11 %
Scleral icterus	*	*	3 %	*
Jaundice	3 %	*	6 %	*
Nausea	3 %	4 %	3 %	2 %
Vomiting	2 %	2 %	*	< 1 %
Pain abdomen	3 %	2 %	2 %	2 %
Metabolic and Nutritional System				
Lipodystrophy	6 %	1 %	5 %	4 %
Weight decreased	2 %	< 1 %	*	2 %
Musculoskeletal System				
Myalgia	*	*	4 %	*
Nervous System				
Peripheral neurologic symptom	2 %	5 %	< 1 %	3%
Depression	-	-	2 %*	*
Skin and Appendages				
Rash	2 %	*	*	< 1 %

* Not reported in this treatment arm.

** NOTE: There are limited safety data from controlled trials for REYATAZ plus ritonavir regimens without tenofovir DF (see [9 DRUG INTERACTIONS](#)).

^a Includes adverse events of possible, probable, certain, or unknown relationship to treatment regimen. Assessments of relationship refer to regimens containing REYATAZ or comparator.

- ^b Based on regimen(s) containing REYATAZ.
- ^c Median time on therapy.
- ^d As a fixed dose combination.

8.2.1 Clinical Trial Adverse Reactions – Pediatrics

Clinical Trial Experience in Pediatric Patients

The safety and tolerability of REYATAZ Capsules with and without ritonavir have been established in pediatric patients at least 6 years of age from the open-label, multicenter clinical trial PACTG 1020A. Use of REYATAZ in pediatric patients less than 6 years of age is under investigation.

The safety profile of REYATAZ in pediatric patients (6 to less than 18 years of age) was comparable to that observed in clinical studies of REYATAZ in adults. The most common Grade 2 – 4 adverse events ($\geq 5\%$, regardless of causality) reported in pediatric patients were cough (21 %), fever (19 %), rash (14 %), jaundice/scleral icterus (13 %), diarrhea (8 %), vomiting (8 %), headache (7 %), and rhinorrhea (6 %). Asymptomatic second-degree atrioventricular block was reported in $< 2\%$ of patients. The most common Grade 3 – 4 laboratory abnormality was elevation of total bilirubin (≥ 3.2 mg/dL) which occurred in 49 % of pediatric patients. All other Grade 3 – 4 laboratory abnormalities occurred with a frequency of less than 3 %. Both the frequency and severity of cardiac conduction abnormalities were greater in pediatric patients in this study than observed in clinical studies in adults.

Patients Co-infected With Hepatitis B and/or Hepatitis C Virus

Liver function tests should be monitored in patients with a history of hepatitis B or C.

In study AI424-138, 60 patients treated with REYATAZ/ritonavir 300 mg/100 mg once daily, and 51 patients treated with lopinavir/ritonavir 400 mg/100 mg twice daily, each with fixed dose tenofovir DF-emtricitabine were seropositive for hepatitis B and/or C at study entry. ALT levels > 5 times ULN developed in 10 % (6/60) of the REYATAZ/ritonavir-treated patients, and 8 % (4/50) of the lopinavir/ritonavir-treated patients. AST levels > 5 times ULN developed in 10 % (6/60) of the REYATAZ/ritonavir-treated patients and none (0/50) of the lopinavir/ritonavir-treated patients. In study AI424-045, 20 patients treated with REYATAZ/ritonavir 300 mg/100 mg once daily and 18 patients treated with lopinavir/ritonavir 400 mg/100 mg twice daily were seropositive for hepatitis B and/or C at study entry. ALT levels > 5 times ULN developed in 25 % (5/20) of the REYATAZ/ritonavir-treated patients and 6 % (1/18) of the lopinavir/ritonavir-treated patients. AST levels > 5 times ULN developed in 10 % (2/20) of the REYATAZ/ritonavir-treated patients and 6 % (1/18) of the lopinavir/ritonavir-treated patients (see [7 WARNINGS AND PRECAUTIONS](#), Hepatic/Biliary, Pancreatic).

In studies AI424-008 and AI424-034, 74 patients treated with 400 mg of REYATAZ once daily, 58 who received efavirenz, and 12 who received nelfinavir were seropositive for hepatitis B and/or C at study entry. AST levels > 5 times the upper limit of normal (ULN) developed in 9 % of the REYATAZ-treated patients, 5 % of the efavirenz-treated patients, and 17 % of the nelfinavir-treated patients. ALT levels > 5 times ULN developed in 15 % of the REYATAZ-treated patients, 14 % of the efavirenz-treated patients, and 17 % of the nelfinavir-treated patients. Within atazanavir and control regimens, no difference in frequency of bilirubin elevations was noted between seropositive and seronegative patients.

8.3 Less Common Clinical Trial Adverse Reactions

Less Common Clinical Trial Adverse Reactions (< 2%)

Treatment-Emergent Adverse Events in all REYATAZ-Treated Patients

Treatment-emergent adverse events of at least moderate intensity occurring in less than 2 % of adult patients receiving REYATAZ in all phase II/III clinical trials with at least a possible relationship to treatment with REYATAZ-containing regimens, and not listed in **Table 4**, **Table 5** or **Table 6** are listed below by body system.

<i>Body as a Whole:</i>	allergic reaction, asthenia, chest pain, fatigue, malaise
<i>Cardiovascular System:</i>	hypertension, palpitation, syncope, edema
<i>Digestive System:</i>	abdominal distension, aphthous stomatitis, dysgeusia, flatulence, gastritis, hepatitis, hepatosplenomegaly, pancreatitis, dry mouth
<i>Immune System:</i>	allergic reaction, angioedema
<i>Metabolic and Nutritional Disorders:</i>	weight gain, anorexia, appetite increased, weight decreased
<i>Musculoskeletal System:</i>	arthralgia, muscle atrophy, myopathy
<i>Nervous System:</i>	abnormal dream, abnormal gait, amnesia, anxiety, confusion, sleep disorder, somnolence
<i>Respiratory System:</i>	dyspnea
<i>Skin and Appendages:</i>	alopecia, eczema, pruritus, urticaria, vesiculobullous rash, vasodilatation
<i>Urogenital System:</i>	gynecomastia, hematuria, kidney pain, proteinuria, pollakiuria, nephrolithiasis

8.4 Abnormal Laboratory Findings: Hematologic, Clinical Chemistry and Other Quantitative Data

Clinical Trial Findings

Laboratory Abnormalities

The percentages of adult treatment-naïve and treatment-experienced patients treated with combination therapy including REYATAZ 300 mg with ritonavir 100 mg and REYATAZ 400 mg (without ritonavir) with Grade 3-4 laboratory abnormalities are presented in **Table 7**, **Table 8** and **Table 9**. The most frequently reported laboratory abnormality in patients receiving regimens containing REYATAZ and one or more NRTIs was elevated bilirubin. Elevations in bilirubin were reported predominantly as elevated indirect [unconjugated] bilirubin.

In clinical studies, the observed magnitude of dyslipidemia was less with REYATAZ than with comparators. However, the clinical impact of such findings has not been demonstrated.

Table 7 Grade 3-4 Laboratory Abnormalities Reported in $\geq 2\%$ of Adult Treatment-Naive Patients^a, Studies AI424-138

Variable	Limit ^c	Treatment-Naive Patients	
		Phase III Studies AI424-138	
		96 weeks ^b REYATAZ 300 mg plus ritonavir 100 mg (once daily) and tenofovir DF plus emtricitabine ^d N = 441	96 weeks ^b lopinavir 400 mg plus ritonavir 100 mg (twice daily) and tenofovir DF plus emtricitabine ^d N = 437
Chemistry	High		
SGOT/AST	$\geq 5.1 \times \text{ULN}$	3 %	1 %
SGPT/ALT	$\geq 5.1 \times \text{ULN}$	3 %	2 %
Total Bilirubin	$\geq 2.6 \times \text{ULN}$	44 %	< 1 %
Lipase	$\geq 2.1 \times \text{ULN}$	2 %	2 %
Creatine Kinase	$\geq 5.1 \times \text{ULN}$	8 %	7 %
Total Cholesterol	$\geq 240 \text{ mg/dL}$	11 %	25 %
Hematology	Low		
Neutrophils	$< 750 \text{ cells/mm}^3$	5 %	2 %
Prothrombin Time	$\geq 1.51 \times \text{ULN}$	2 %	6 %

^a Based on the regimen containing REYATAZ.

^b Median time on therapy.

^c ULN = upper limit of normal.

^d As a fixed-dose combination: 300 mg tenofovir DF, 200 mg emtricitabine once daily.

Table 8 Selected Grade 3-4 Laboratory Abnormalities Reported in ≥ 2 % of Adult Treatment-Naive Patients^a, Studies AI424-034, AI424-007 and AI424-008					
Variable	Limit^d	Treatment-Naive Patients			
		Phase III Study AI424-034		Phase II Studies AI424-007, -008	
		64 weeks^b REYATAZ 400 mg once daily + lamivudine + zidovudine^e	64 weeks^b efavirenz 600 mg once daily + lamivudine + zidovudine^e	120 weeks^{b,c} REYATAZ 400 mg once daily + stavudine + lamivudine or + stavudine + didanosine	73 weeks^{b,c} nelfinavir 750 mg TID or 1250 mg BID + stavudine + lamivudine or + stavudine + didanosine
		N = 404	N = 401	N = 279	N = 191
Chemistry	High				
AST	≥ 5.1 X ULN	2 %	2 %	7 %	5 %
ALT	≥ 5.1 X ULN	4 %	3 %	9 %	7 %
Total Bilirubin	≥ 2.6 X ULN	35 %	< 1 %	47 %	3 %
Amylase	≥ 2.1 X ULN	*	*	14 %	10 %
Lipase	≥ 2.1 X ULN	< 1 %	1 %	4 %	5 %
Creatine Kinase	≥ 5.1 X ULN	6 %	6 %	11 %	9 %
Hematology	Low				
Hemoglobin	< 8.0 g/L	5 %	3 %	< 1 %	4 %
Neutrophils	< 750 cells/mm ³	7 %	9 %	3 %	7 %

* Not reported in this treatment arm.

** NOTE: There are limited safety data from controlled trials for REYATAZ plus ritonavir regimens without tenofovir DF (see [9 DRUG INTERACTIONS](#)).

^a Based on regimen(s) containing REYATAZ.

^b Median time on therapy. In Study AI424-034 efficacy analyses are based on 48-week data. Safety data are derived from a 64-week safety update report.

^c Includes long term follow-up.

^d ULN = upper limit of normal.

^e As a fixed-dose combination: 150 mg lamivudine, 300 mg zidovudine twice daily.

Table 9 Selected Grade 3-4 Laboratory Abnormalities Reported in $\geq 2\%$ of Adult Treatment-Experienced Patients^a, Studies AI424-043 and AI424-045

Variable	Limit ^c	Treatment-Experienced Patients			
		Phase III Study AI424-043		Phase III Studies AI424-045**	
		48 weeks ^b		48 weeks ^b	48 weeks ^b
		REYATAZ 400 mg once daily + 2NRTIs N = 144	lopinavir + ritonavir (400/100 mg) BID ^d + 2NRTIs N = 146	REYATAZ 300 mg once daily + ritonavir 100 mg once daily + tenofovir DF + NRTI N = 119	lopinavir + ritonavir (400/100 mg) BID ^d + tenofovir DF + NRTI N = 118
Chemistry	High				
AST	$\geq 5.1 \times \text{ULN}$	3 %	3 %	3 %	3 %
ALT	$\geq 5.1 \times \text{ULN}$	7 %	3 %	4 %	3 %
Total Bilirubin	$\geq 2.6 \times \text{ULN}$	25 %	< 1%	49 %	< 1 %
Lipase	$\geq 2.1 \times \text{ULN}$	4 %	3 %	5 %	6 %
Creatine Kinase	$\geq 5.1 \times \text{ULN}$	8 %	6 %	8 %	8 %
Hematology	Low				
Platelets	< 50,000/mm ³	*	*	2 %	3 %
Neutrophils	< 750 cells/mm ³	6 %	5 %	7 %	8 %

* Not reported in this treatment arm.

** NOTE: There are limited safety data from controlled trials for REYATAZ plus ritonavir regimens without tenofovir DF (see [9 DRUG INTERACTIONS](#)).

^a Based on regimen(s) containing REYATAZ.

^b Median time on therapy. In Study AI424-034 efficacy analyses are based on 48-week data. Safety data are derived from a 64-week safety update report.

^c ULN = upper limit of normal.

^d As a fixed dose combination.

Lipids – Treatment-Naive Patients

Table 10 and Table 11 present the changes in lipids, insulin and glucose for the treatment-naive studies.

Table 10 Lipid, Glucose and Insulin Mean Values, Study AI424-138										
	REYATAZ/ritonavir ^{a,b}					Lopinavir/ritonavir ^{b,c}				
	Baseline mmol/L ^h N = 428 ^e	Week 48 mmol/L ^h N = 372 ^e	Week 48 Change ^{d,g} N = 372 ^e	Week 96 mmol/L ^h N = 342 ^e	Week 96 Change ^{d,g} N = 342 ^e	Baseline mmol/L ^h N = 424 ^e	Week 48 mmol/L ^h N = 335 ^e	Week 48 Change ^{d,g} N = 335 ^e	Week 96 mmol/L ^h N = 291 ^e	Week 96 Change ^{d,g} N = 291 ^e
Total- Cholesterol ^f	3.86	4.36	+13 %	4.38	+13 %	3.88	4.84	+25 %	4.81	+25 %

HDL-Cholesterol ^f	0.95	1.2	+29 %	1.14	+21 %	0.93	1.24	+37 %	1.19	+29 %
LDL-Cholesterol ^f	2.38	2.70	+14 %	2.72	+14 %	2.4	2.87	+19 %	2.84	+17 %
Triglycerides ^f	1.42	1.63	+15 %	1.58	+13 %	1.46	2.2	+52 %	2.08	+50 %
Insulin	57.7	76.6	+ 18.1	58.9	+1.1	59.9	61.1	+1.2	51.8	-5.5
Glucose	4.77	4.86	+0.12	4.97	+0.22	4.88	4.9	+0.01	4.96	+0.05

^a REYATAZ 300 mg plus ritonavir 100 mg once daily with the fixed-dose combination: 300 mg tenofovir DF, 200 mg emtricitabine once daily.

^b Values obtained after initiation of serum lipid-reducing agents were not included in these analyses. Use of serum lipid-reducing agents was more common in the lopinavir/ritonavir treatment arm (8 %) than in the REYATAZ/ritonavir arm (2 %). Through Week 96, serum lipid-reducing agents were used in 10 % in the lopinavir/ritonavir treatment arm and 3 % in the REYATAZ/ritonavir arm.

^c Lopinavir 400 mg plus ritonavir 100 mg twice daily with the fixed-dose combination 300 mg tenofovir DF, 200 mg emtricitabine once daily.

^d The change from baseline is the mean of within-patient changes from baseline for patients with both baseline and Week 48 or Week 96 values and is not a simple difference of the baseline and Week 48 or Week 96 mean values, respectively.

^e Number of patients with LDL-cholesterol measured.

^f Fasting.

^g Absolute changes are reported for insulin and glucose levels

^h Units are pmol/L for insulin

Table 11 Lipid, Insulin, and Glucose Mean Values from Study AI424-034*						
	REYATAZ^a			Efavirenz^b		
	Baseline	Week 48		Baseline	Week 48	
	mmol/L^c (n = 383^e)	mmol/L^c (n = 283^e)	% Change^{c,f} (n = 272^e)	mmol/L^c (n = 378^e)	mmol/L^c (n = 264^e)	% Change^{c,f} (n = 253^e)
Total Cholesterol	4.24	4.34	+ 2 %	4.19	5.04	+ 21 %
HDL-Cholesterol	1.01	1.11	+ 13 %	0.98	1.19	+ 24 %
LDL-Cholesterol ^g	2.53	2.53	+ 1 %	2.53	2.95	+ 18 %
Triglycerides ^g	1.56	1.4	- 9 %	1.46	1.9	+ 23 %
Total-to-HDL Cholesterol Ratio < 3	13 %	17 %		9 %	14 %	
Insulin ^{d, g}	81.1	88.3	+9.3	71	82.5	+10.1
Glucose ^{d, g}	5	5.2	+0.17	5	5.2	+0.33

* No multivariate analyses were performed on these data.

^a REYATAZ 400 mg once daily with the fixed dose combination: 150 mg lamivudine, 300 mg zidovudine twice daily.

^b Efavirenz 600 mg once daily with the fixed dose combination: 150 mg lamivudine, 300 mg zidovudine twice daily.

^c Units are pmol/mL for insulin levels.

^d Absolute changes are reported for insulin and glucose levels.

^e Number of patients with LDL cholesterol measured.

^f The change from baseline is the mean of within patient changes from baseline for patients with both baseline and Week 48 values and is not a simple difference of the baseline and Week 48 mean values.

^g Fasting

Lipids – Treatment-Experienced Patients

Table 12, Table 13 and **Table 14** present the changes from baseline in lipids, insulin and glucose for the treatment-experienced studies.

Table 12 Lipid, Insulin, and Glucose Mean Values from Study AI424-043*						
	REYATAZ^a			Lopinavir + ritonavir^b		
	Baseline	Week 48		Baseline	Week 48	
	mmol/L^c (n = 143^e)	mmol/L^c (n = 101^e)	% Change^{d,g} (n = 101^e)	mmol/L^c (n = 144^e)	mmol/L^c (n = 99^e)	% Change^{d,g} (n = 99^e)
Total Cholesterol	4.68	4.50	- 2 %	4.53	5.02	+ 12 %
HDL-Cholesterol	1.01	1.06	+ 9 %	0.96	1.11	+ 10 %
LDL-Cholesterol ^{f, h}	2.74	2.56	- 6 % ^f	2.66	2.79	+ 3 %
Triglycerides ^h	2.17	4.50	+ 1 %	2.17	6.52	+ 53 %
Total-to-HDL Cholesterol Ratio < 3	7%	12%		7%	10%	
Insulin ^h	76.1	86.1	+14.4	71.0	78.9	+7.9
Glucose ^h	4.9	5.1	+0.17	5	5.0	-0.6

* No multivariate analyses were performed on these data.

^a REYATAZ 400 mg once daily + 2 NRTIs.

^b Lopinavir + ritonavir (400/100 mg) BID + 2 NRTIs.

^c Units are pmol/mL for insulin levels.

^d Absolute changes are reported for insulin and glucose levels.

^e Number of patients with LDL cholesterol measured.

^f Protocol-defined co-primary safety outcome measure.

^g The change from baseline is the mean of within patient changes from baseline for patients with both baseline and Week 48 values and is not a simple difference of the baseline and Week 48 mean values.

^h Fasting

Table 13 Lipid and Glucose Mean Values from Study AI424-045*						
	ATV 300/RTV^a			LPV/RTV^b		
	Baseline	Week 48		Baseline	Week 48	
	mmol/L (n = 112^c)	mmol/L (n = 75^c)	% Change (n = 74)	mmol/L (n = 108^c)	mmol/L (n = 76^c)	% Change (n = 73)
Total Cholesterol	4.86	4.40	-8 %	4.68	4.83	6 %
HDL-Cholesterol	1.03	1.00	-7 %	1.01	1.06	2 %
LDL-Cholesterol ^e	2.82	2.53	-10 %	2.69	2.66	1 %
Triglycerides	2.43	4.16	-4 %	2.21	5.79	30 %
Total-to-HDL Cholesterol Ratio < 3	9 %	13 %		12 %	13 %	
Glucose ^{d, e}	5.27	5.49	+0.22	5.00	5.10	+0.06

* There are limited safety data from controlled trials for REYATAZ plus ritonavir regimens without tenofovir DF

(see [9 DRUG INTERACTIONS](#))

No multivariate analyses were performed on these data.

- ^a REYATAZ 300 mg + ritonavir 100 mg once daily + tenofovir DF + 1 NRTI
- ^b Lopinavir + ritonavir (400/100 mg) BID + tenofovir DF + 1 NRTI.
- ^c Number of patients with LDL cholesterol measured.
- ^d Absolute changes are reported for glucose levels.
- ^e Fasting

Table 14 Lipid, Insulin and Glucose Values from Study AI424-044 (Nelfinavir patients in study AI424-008 who switched to REYATAZ^a in the long term AI424-044 study)*				
	Baseline Study AI424-008	Entry Study AI424-044	Week 12 Study AI424-044	
	mmol/L^a (n = 54^b)	mmol/L^a (n = 33^b)	mmol/L^a (n = 41^b)	% Change^c (n = 29^b)
Total Cholesterol	4.34	5.53	4.53	-16 %
HDL-Cholesterol	1.09	1.19	1.24	+5 %
LDL-Cholesterol ^d	2.53	3.57	2.69	-21 %
Triglycerides ^d	1.19	1.77	1.22	-28 %
Insulin ^d	-	70.3	66.7	-
Glucose ^d	-	4.77	4.88	-

* No multivariate analyses were performed on these data.

^a Units are pmol/mL for insulin levels.

^b Number of patients with LDL cholesterol measured.

^c The change from entry is the mean of within patient changes from entry for patients with both entry and Week 12 values and is not a simple difference of the entry and Week 12 mean values.

^d Fasting

8.5 Post-Market Adverse Reactions

The following events have been identified during post approval use of REYATAZ. Because they are reported voluntarily from a population of unknown size, estimates of frequency cannot be made. These events have been chosen for inclusion due to their seriousness, frequency of reporting, or causal connection to REYATAZ, or a combination of these factors.

Cardiac disorders and vascular disorders: second-degree AV block, third-degree AV block, QTc prolongation, Torsades de Pointes, left bundle branch block

Gastrointestinal system: pancreatitis

Hepatic system: hepatic function abnormalities

Hepatobiliary disorders: cholelithiasis, cholecystitis, cholestasis

Immune system: angioedema

Metabolism and nutrition disorders: hyperglycemia, diabetes mellitus

Renal system: nephrolithiasis, interstitial nephritis, chronic kidney disease

Skin and appendages: pruritus, maculopapular rash

9 DRUG INTERACTIONS

9.1 Serious Drug Interactions

Serious Drug Interactions

Atazanavir is an inhibitor of CYP3A and UGT1A1. Coadministration of REYATAZ and drugs primarily metabolized by CYP3A or UGT1A1 may result in increased plasma concentrations of the other drug that could increase or prolong its therapeutic and adverse effects.

Atazanavir is a weak inhibitor of CYP2C8. Caution should be used when REYATAZ without ritonavir is co-administered with drugs highly dependent on CYP2C8 with narrow therapeutic indices (e.g., paclitaxel, repaglinide). When REYATAZ with ritonavir is co-administered with substrates of CYP2C8, clinically significant interactions are not expected.

The magnitude of CYP3A-mediated drug interactions on co-administered drug may change when REYATAZ is co-administered with ritonavir. See the complete prescribing information for NORVIR® (ritonavir) for information on drug interactions with ritonavir.

Examples of drugs that are contraindicated for co-administration with REYATAZ are included in [2 CONTRAINDICATIONS](#), Table 1. Information related to the respective contraindications and to drugs with established and other potentially significant drug interactions are included in Table 15.

9.2 Drug Interactions Overview

Atazanavir is an inhibitor of CYP3A and UGT1A1. Co-administration of REYATAZ and drugs primarily metabolized by CYP3A [e.g., calcium channel blockers, HMG-CoA reductase inhibitors, immunosuppressants, and phosphodiesterase (PDE5) inhibitors], or UGT1A1 (e.g., irinotecan) may result in increased plasma concentrations of the other drug that could increase or prolong its therapeutic and adverse effects.

Atazanavir should not be administered concurrently with medications with narrow therapeutic windows that are substrates of CYP3A or UGT1A1 (see [2 CONTRAINDICATIONS](#)).

Atazanavir is a weak inhibitor of CYP2C8. Caution should be used when REYATAZ without ritonavir is co-administered with drugs highly dependent on CYP2C8 with narrow therapeutic indices (e.g., paclitaxel, repaglinide). When REYATAZ with ritonavir is co-administered with substrates of CYP2C8, clinically significant interactions are not expected. See the complete prescribing information for NORVIR® for information on other potential drug interactions with ritonavir.

Clinically significant interactions are not expected between atazanavir and substrates of CYP2C19, CYP2C9, CYP2D6, CYP2B6, CYP2A6, CYP1A2, or CYP2E1.

9.4 Drug-Drug Interactions

Examples of drugs that are contraindicated for co-administration with REYATAZ are included in **Table 1**. Information related to the respective contraindications and to drugs with established and other potentially significant drug interactions are included in Table 15. These recommendations are based on either drug interaction studies or predicted interactions due to the expected magnitude of interaction and potential for serious events or loss of efficacy.

Table 15 Established and Other Potentially Significant Drug Interactions: Alteration in Dose or Regimen May Be Recommended Based on Drug Interaction Studies or Predicted Interactions^a		
Concomitant Drug Class: Specific Drugs	Effect on Concentration of REYATAZ or Concomitant Drug	Clinical Comment
Antiviral Agents - Human Immunodeficiency Virus		
Non-nucleoside Reverse Transcriptase Inhibitors (NNRTIs): • efavirenz	↓ atazanavir	Efavirenz decreases atazanavir exposure (see Table 16, 9 DRUG INTERACTIONS). For treatment-naïve patients: If REYATAZ is combined with efavirenz, REYATAZ 400 mg (two 200 mg capsules) with ritonavir 100 mg should be administered once daily all as a single dose with food, and efavirenz should be administered on an empty stomach, preferably at bedtime. For Treatment-experienced patients: Do not co-administer REYATAZ with efavirenz in treatment-experienced patients due to decreased atazanavir exposure.
• nevirapine	↓ atazanavir	Nevirapine, an inducer of CYP3A4, substantially decreases atazanavir exposure. There is a potential risk for nevirapine associated toxicity due to the increased nevirapine exposures. Do not co-administer REYATAZ with nevirapine.

<p>Nucleoside Reverse Transcriptase Inhibitors (NRTIs):</p> <ul style="list-style-type: none"> • didanosine buffered formulations • didanosine EC formulation 	<p>↓ atazanavir</p> <p>↓ atazanavir ↓ didanosine</p>	<p>Co-administration with REYATAZ did not alter exposure to didanosine; however, exposure to atazanavir was markedly decreased by coadministration of REYATAZ with didanosine buffered tablets (presumably due to the increase in gastric pH caused by buffers in the didanosine tablets). Atazanavir should be given with food, 2 hours before or 1 hour after didanosine buffered formulations (which are given on an empty stomach).</p> <p>Due to the different food restrictions (didanosine EC given without food and atazanavir given with food) they should be administered at different times. Administration of the enteric-coated formulation of didanosine with atazanavir or atazanavir/ritonavir and a light meal decreased exposure to didanosine.</p>
<p>Nucleotide Reverse Transcriptase Inhibitors (NRTIs): tenofovir DF</p>	<p>↓ atazanavir ↑ tenofovir</p>	<p>REYATAZ as a single PI, without ritonavir, may be less effective due to decreased atazanavir concentrations in patients taking REYATAZ and tenofovir DF (see Table 16, 9 DRUG INTERACTIONS). If REYATAZ is to be co-administered with tenofovir DF, it is recommended that REYATAZ 300 mg with ritonavir 100 mg be co-administered with tenofovir DF 300 mg (see 4 DOSAGE AND ADMINISTRATION). REYATAZ without ritonavir should not be co-administered with tenofovir DF. Atazanavir increases tenofovir concentrations. Higher tenofovir concentrations could potentiate tenofovir-associated adverse events, including renal disorders. Patients receiving atazanavir and tenofovir DF should be monitored for tenofovir-associated adverse events. No dose adjustment for tenofovir DF is recommended.</p>

Protease Inhibitor PIs:		
• saquinavir (soft gelatine capsules)	↑ saquinavir	The safety and efficacy of this combination have not been established. In a clinical study, saquinavir 1200 mg co-administered with REYATAZ 400 mg and tenofovir 300 mg (all given once daily) plus a nucleoside reverse transcriptase inhibitor did not provide adequate efficacy (see 14 CLINICAL TRIALS).
• ritonavir	↑ atazanavir	If REYATAZ is co-administered with ritonavir, it is recommended that REYATAZ 300 mg once daily be given with ritonavir 100 mg once daily with food (see 4 DOSAGE AND ADMINISTRATION). See the complete product monograph for NORVIR® (ritonavir) for information on drug interactions with ritonavir.
• Other PIs	↑ Other PIs	Although not studied, the co-administration of REYATAZ plus ritonavir with other protease inhibitors would be expected to increase exposure to the other protease inhibitor and is not recommended.
Other Agents		
Alpha 1-adrenoreceptor antagonist	↑ alfuzosin	CONTRAINDICATED due to potential for increased alfuzosin concentrations which can result in hypotension.
Antacids and buffered medications	↓ atazanavir	Reduced plasma concentrations of atazanavir are expected if antacids, including buffered medications, are administered with REYATAZ. REYATAZ should be administered 2 hours before or 1 hour after these medications.
Antianginal	↑ ranolazine	CONTRAINDICATED if REYATAZ is co-administered with ritonavir, due to potential for serious and life-threatening reactions

Antiarrhythmics:		
amiodarone quinidine	↑ amiodarone, ↑ quinidine ↑ dronedarone ↑ flecainide ↑ propafen	CONTRAINDICATED: Co-administration of REYATAZ with ritonavir and either quinidine, amiodarone, dronedarone, flecainide, and propafenone due to the potential for serious or life-threatening reactions such as cardiac arrhythmias.
lidocaine (systemic)	↑ lidocaine (systemic),	Co-administration of REYATAZ without ritonavir has the potential to produce serious and/or life-threatening adverse events but has not been studied. Caution is warranted and therapeutic concentration monitoring of drug levels is recommended if they are used concomitantly with REYATAZ without ritonavir

<p>Anticoagulants: Vitamin K Antagonists</p> <p>Direct-acting oral anticoagulants (DOACs)</p>	<p>↑ warfarin</p> <p>↑ apixaban</p> <p>↑ dabigatran, edoxaban</p> <p>↑ rivaroxaban</p>	<p>Co-administration with REYATAZ has the potential to produce serious and/or life-threatening bleeding and has not been studied. It is recommended that International Normalized Ratio (INR) be monitored.</p> <p>CONTRAINDICATED: Co-administration of REYATAZ with ritonavir, a strong CYP3A4/P-gp inhibitor, may result in an increased exposure of the respective DOAC, which could lead to an increased risk of bleeding.</p> <p>Concomitant use of REYATAZ, a CYP3A4 inhibitor, and apixaban may result in increased exposure of apixaban, which could lead to an increased risk of bleeding. Close monitoring is recommended when apixaban is co-administered with REYATAZ.</p> <p>Concomitant use of REYATAZ and ritonavir, a strong CYP3A4/P-gp inhibitor, with either dabigatran or edoxaban, may result in an increased exposure of the respective DOAC, which could lead to an increased risk of bleeding. Refer to the respective DOAC prescribing information regarding dosing instructions for co-administration with P-gp inhibitors.</p> <p>CONTRAINDICATED: Co-administration of REYATAZ with ritonavir, a strong CYP3A4/P-gp inhibitor, may result in an increased exposure of the respective DOAC, which could lead to an increased risk of bleeding</p> <p>Concomitant use of REYATAZ, a CYP3A4 inhibitor, and rivaroxaban, may result in increased exposure of rivaroxaban, which could lead to an increased risk of bleeding. Close monitoring is recommended when rivaroxaban is co-administered with REYATAZ.</p>
---	--	---

Anticonvulsants carbamazepine, phenobarbital, phenytoin lamotrigine	<p>↓ atazanavir</p> <p>↓ lamotrigine</p>	<p>CONTRAINDICATED: Co-administration of either carbamazepine, phenytoin or phenobarbital and REYATAZ with or without ritonavir due to the risk for loss of virologic response and development of resistance.</p> <p>Co-administration of lamotrigine and REYATAZ with ritonavir may decrease lamotrigine plasma concentrations. Dose adjustment of lamotrigine may be required when co-administered with REYATAZ and ritonavir. Co-administration of lamotrigine and REYATAZ without ritonavir is not expected to decrease lamotrigine plasma concentrations. No dose adjustment of lamotrigine is required when co-administered with REYATAZ without ritonavir.</p>
Antidepressants:	<p>↑ tricyclic antidepressants</p> <p>↑ trazodone</p>	<p>Co-administration with REYATAZ has the potential to produce serious and/or life-threatening adverse events and has not been studied. Concentration monitoring of these drugs is recommended if they are used concomitantly with REYATAZ.</p> <p>Concomitant use of trazodone and REYATAZ with or without ritonavir may increase plasma concentrations of trazodone. Adverse events of nausea, dizziness, hypotension, and syncope have been observed following co-administration of trazodone and ritonavir. If trazodone is used with a CYP3A4 inhibitor such as REYATAZ, the combination should be used with caution and a lower dose of trazodone should be considered.</p>

Antifungals: ketoconazole, itraconazole	↑ atazanavir ↑ ritonavir ↑ ketoconazole ↑ itraconazole	Co-administration of ketoconazole has only been studied with REYATAZ without ritonavir (negligible increase in atazanavir AUC and C_{max}). Due to the effect of ritonavir on ketoconazole, high doses of ketoconazole and itraconazole (>200 mg/day) should be used with caution with REYATAZ/ritonavir.
voriconazole	<p><i>REYATAZ/ ritonavir in subjects with a functional CYP2C19 allele:</i></p> ↓ atazanavir ↓ voriconazole <p><i>REYATAZ/ ritonavir in subjects without a functional CYP2C19 allele:</i></p> ↓ atazanavir ↑ voriconazole	<p>Voriconazole should not be administered to patients receiving REYATAZ and ritonavir (100 mg once daily) unless an assessment of the benefit/risk to the patient justifies the use of voriconazole. Patients should be carefully monitored for voriconazole-associated adverse events and loss of either voriconazole or atazanavir efficacy during the co-administration of voriconazole and REYATAZ/ritonavir.</p> <p>Co-administration of voriconazole with REYATAZ (without ritonavir) may increase atazanavir concentrations; however, no data are available.</p> <p>Co-administration of voriconazole with high-dose ritonavir (400 mg every 12 hours) is contraindicated due to a significant reduction in voriconazole plasma concentrations and possible loss of effect. Please see the NORVIR® and VFEND* Product Monograph for additional information.</p>

Antigout: colchicine	↑ colchicine	<p>For patients with renal and/or hepatic impairment: CONTRAINDICATED: Co-administration of colchicine with REYATAZ (with ritonavir) is contraindicated due to potential for serious and/or life-threatening reactions</p> <p>For patients with normal renal and/or hepatic function: Recommended dosage of colchicine when administered with REYATAZ:</p> <p><i>Treatment of gout flares:</i> 0.6 mg (1 tablet) for 1 dose, followed by 0.3 mg (half tablet) 1 hour later. Not to be repeated before 3 days.</p> <p><i>Prophylaxis of gout flares:</i> If the original regimen was 0.6 mg <i>twice</i> a day, the regimen should be adjusted to 0.3 mg once a day. If the original regimen was 0.6 mg <i>once</i> a day, the regimen should be adjusted to 0.3 mg once every other day.</p> <p><i>Treatment of familial Mediterranean fever (FMF):</i> Maximum daily dose of 0.6 mg (may be given as 0.3 mg twice a day).</p>
Antimycobacterials: rifabutin	↑ rifabutin	<p>A rifabutin dose reduction of up to 75 % (e.g., 150 mg every other day or 3 times per week) is recommended. Concomitant use of REYATAZ with or without ritonavir and rifabutin may result in decreased neutrophil count or neutropenia. Increased monitoring for neutropenia should be performed if these drugs are co-administered. Further dosage reduction of rifabutin may be necessary.</p>
rifampin	↓ atazanavir	<p>CONTRAINDICATED: Co-administration of rifampin and REYATAZ with or without ritonavir due to substantially decreased plasma concentrations of atazanavir, potentially resulting in the risk of loss of virologic response and development of resistance</p>

Antineoplastics:		
apalutamide	↓ atazanavir	CONTRAINDICATED: Co-administration of apalutamide (a strong CYP3A4 inducer) with REYATAZ with or without ritonavir is contraindicated due to the potential decrease in systemic exposure to atazanavir and ritonavir which may result in subsequent loss of virologic response and possible resistance to the class of protease inhibitors
encorafenib	↓ atazanavir ↑ encorafenib	CONTRAINDICATED: Co-administration of encorafenib with REYATAZ (with or without ritonavir) is contraindicated due to the potential risk for loss of virologic response, development of resistance, and risk of serious adverse events such as QT interval prolongation.
irinotecan	↑ irinotecan	CONTRAINDICATED: Co-administration with irinotecan is not recommended. Atazanavir inhibits UGT and may interfere with the metabolism of irinotecan resulting in increased irinotecan toxicities.
neratinib	↑ neratinib	CONTRAINDICATED: Co-administration of neratinib with REYATAZ (with ritonavir) is contraindicated due to the potential for serious and/or life-threatening reactions including hepatotoxicity.
venetoclax	↑ venetoclax	CONTRAINDICATED: Co-administration of venetoclax with REYATAZ (with ritonavir) is contraindicated due to the risk of tumor lysis syndrome at the dose initiation and during the ramp-up phase.
Antiplatelets		
clopidogrel	↓ clopidogrel active metabolite	Co-administration with clopidogrel is not recommended due to potential reduction of the antiplatelet activity of clopidogrel.
prasugrel	↔ prasugrel	No dose adjustment is needed when prasugrel is co-administered with REYATAZ with or without ritonavir.
ticagrelor	↑ ticagrelor	CONTRAINDICATED due to potential increase in antiplatelet activity of ticagrelor.

Antipsychotics:		
lurasidone	REYATAZ/ritonavir ↑ lurasidone	CONTRAINDICATED: Co-administration of lurasidone with REYATAZ/ritonavir
	REYATAZ ↑ lurasidone	REYATAZ without ritonavir If co-administration is necessary, reduce the lurasidone dose. Refer to the lurasidone prescribing information for concomitant use with moderate CYP3A4 inhibitors.
pimozide	↑ pimozide	CONTRAINDICATED due to potential for serious and/or life-threatening reactions such as cardiac arrhythmias.
quetiapine	↑ quetiapine	REYATAZ should not be used in combination with quetiapine. Due to CYP3A4 inhibition by REYATAZ, concentrations of quetiapine are expected to increase, which can result in serious and/or life-threatening adverse reactions. If coadministration is necessary, monitoring and quetiapine dose reduction may be required (see 7 WARNINGS AND PRECAUTIONS , General).
Antiviral Agents - Direct Acting Hepatitis C		CONTRAINDICATED: Co-administration of REYATAZ with glecaprevir/pibrentasvir is contraindicated because of the increased risk of ALT elevations due to an increase in glecaprevir and pibrentasvir plasma concentrations.
glecaprevir /pibrentasvir	↑ glecaprevir ↑ pibrentasvir	
Benzodiazepines: midazolam (Parenterally administered)	↑ midazolam	If REYATAZ is co-administered with parenteral midazolam, close clinical monitoring for respiratory depression and/or prolonged sedation should be exercised, and dosage adjustment should be considered.
triazolam		CONTRAINDICATED due to potential for serious and/or life-threatening events such as prolonged or increased sedation or respiratory depression.
Beta-adrenergic blocker	↔ atenolol	In a pharmacokinetic study between atazanavir 400 mg once daily and atenolol 50 mg once daily, there was no substantial additive effect of atazanavir and atenolol on the PR interval. When used in combination with REYATAZ, there is no need to adjust the dose of atenolol.
atenolol		

Long-Acting Beta-Adrenoceptor salmeterol	↑salmeterol	CONTRAINDICATED. Concomitant use of salmeterol and REYATAZ co-administered with ritonavir may result in increased cardiovascular adverse events associated with salmeterol, including QT prolongation, palpitations and sinus tachycardia. Salmeterol and REYATAZ with ritonavir are contraindicated.
Calcium channel blockers: diltiazem felodipine, nifedipine, nicardipine, and verapamil	↑ diltiazem and deacetyl-diltiazem ↑ felodipine, nifedipine, nicardipine, and verapamil	In a pharmacokinetic study between atazanavir 400 mg once daily and diltiazem 180 mg once daily, a CYP3A substrate, there was a 2-fold increase in the diltiazem plasma concentration and an additive effect on the PR interval. When used in combination with REYATAZ, a dose reduction of diltiazem by one half should be considered and ECG monitoring is recommended. Co-administration of REYATAZ/ritonavir with diltiazem has not been studied. Caution is warranted. Dose titration of the calcium channel blocker should be considered. ECG monitoring is recommended.

Dexamethasone and other corticosteroids (all routes of administration)	↓ atazanavir	<p>Co-administration with dexamethasone or other corticosteroids that induce CYP3A may result in loss of therapeutic effect of REYATAZ and development of resistance to atazanavir and/or ritonavir. Alternative corticosteroids should be considered. Co-administration with corticosteroids (all routes of administration) that are metabolized by CYP3A, particularly for long-term use, may increase the risk for development of systemic corticosteroid effects including Cushing's syndrome and adrenal suppression. Consider the potential benefit of treatment versus the risk of systemic corticosteroid effects.</p> <p>For co-administration of cutaneously-administered corticosteroids sensitive to CYP3A inhibition, refer to the prescribing information of the corticosteroid for conditions or uses which augment its systemic absorption. The mechanism of interaction is CYP3A4 induction by dexamethasone and CYP3A4 inhibition by atazanavir and/or ritonavir.</p>
Inhaled/nasal corticosteroids (interaction with ritonavir)	↑ fluticasone propionate	<p>In healthy volunteers, ritonavir significantly increased plasma fluticasone propionate exposures, resulting in significantly decreased serum cortisol concentrations. Concomitant use of REYATAZ/ritonavir with fluticasone propionate is expected to produce the same effects. Systemic corticosteroid effects including Cushing's syndrome and adrenal suppression have been reported when ritonavir was co-administered with inhaled or intranasally administered fluticasone propionate. These effects could also occur with other corticosteroids metabolized via the cytochrome P450 3A pathway, e.g., budesonide. Therefore, concomitant use of REYATAZ/ritonavir and fluticasone propionate or other inhaled or intranasal glucocorticoids that are metabolized by CYP3A4 is not recommended unless the potential benefit of treatment outweighs the risk of systemic corticosteroid effects. Concomitant use of fluticasone propionate and REYATAZ (without ritonavir) may increase plasma concentrations of fluticasone propionate. Use with caution. Consider alternatives to fluticasone propionate, particularly for long-term use.</p>

Endothelin receptor antagonists: bosentan	↓ atazanavir ↑ bosentan	<p>Bosentan is metabolized by CYP3A4 and is an inducer of CYP3A4. Plasma concentrations of atazanavir may be decreased when bosentan is administered with REYATAZ without ritonavir. Coadministration of bosentan and REYATAZ without ritonavir is not recommended.</p> <p><i>Co-administration of bosentan in patients on REYATAZ/ritonavir:</i></p> <p>For patients who have been receiving REYATAZ /ritonavir for at least 10 days, start bosentan at 62.5 mg once daily or every other day based on individual tolerability.</p> <p><i>Co-administration of REYATAZ/ ritonavir in patients on bosentan:</i></p> <p>Discontinue bosentan at least 36 hours before starting REYATAZ /ritonavir. At least 10 days after starting REYATAZ/ritonavir, resume bosentan at 62.5 mg once daily or every other day based on individual tolerability.</p>
Ergot Derivatives dihydroergotamine, ergotamine, ergonovine, methylergonovine		CONTRAINDICATED due to potential for serious and/or life-threatening events such as acute ergot toxicity characterized by peripheral vasospasm and ischemia of the extremities and other tissues.
Gonadotropin-releasing hormone antagonist Receptor (GnRH) Antagonists: elagolix:	↑ elagolix	<p>Plasma concentrations of atazanavir and/or ritonavir may be decreased when elagolix is administered with REYATAZ with or without ritonavir. Concomitant use of elagolix 200 mg twice daily with REYATAZ with or without ritonavir for more than 1 month is not recommended due to the potential risk of adverse events such as bone loss and hepatic transaminase elevations. Limit concomitant use of elagolix 150 mg once daily with REYATAZ with or without ritonavir to 6 months. In addition, monitor virologic responses due to the potential reduction in atazanavir/ritonavir exposure.</p>

H ₂ -Receptor Antagonists	↓ atazanavir	<p>Plasma concentrations of atazanavir were substantially decreased when REYATAZ 400 mg once daily was administered simultaneously with famotidine 40 mg twice daily, which may result in loss of virologic response and development of resistance. Although not studied, similar results are expected with other H₂-receptor antagonists.</p> <p>In treatment-naïve patients: The H₂-receptor antagonist dose should not exceed a 40 mg dose equivalent of famotidine twice daily. REYATAZ 300 mg with ritonavir 100 mg once daily (all as a single dose with food) should be administered simultaneously with, and/or at least 10 hours after, the dose of the H₂-receptor antagonist.</p> <p>In treatment-experienced patients: The H₂-receptor antagonist dose should not exceed a dose equivalent to famotidine 20 mg twice daily, and the REYATAZ and ritonavir doses should be administered simultaneously with, and/or at least 10 hours after, the dose of the H₂-receptor antagonist.</p> <ul style="list-style-type: none"> • REYATAZ 300 mg with ritonavir 100 mg once daily (all as a single dose with food) if taken with an H₂-receptor • REYATAZ 400 mg with ritonavir 100 mg once daily (all as a single dose with food) if taken with both tenofovir DF and an H₂-receptor antagonist.
Herbal Products St. John's wort (Hypericum perforatum)		CONTRAINDICATED: Patients taking REYATAZ should not use products containing St. John's wort (Hypericum perforatum) because co-administration may be expected to reduce plasma concentrations of atazanavir. This may result in loss of therapeutic effect and development of resistance.
Immunosuppressants:	↑ cyclosporin, sirolimus, tacrolimus	Therapeutic concentration monitoring is recommended for immunosuppressant agents when co-administered with REYATAZ.
Kinase Inhibitors: fostamatinib	↑ fostamatinib	Concomitant use of fostamatinib with REYATAZ with or without ritonavir may increase the plasma concentration of R406, the active metabolite of fostamatinib. Monitor for toxicities of R406 exposure resulting in dose-related adverse events such as hepatotoxicity and neutropenia. Fostamatinib dose reduction may be required.

<p>Lipid-Modifying Agents: HMG-CoA Reductase Inhibitors:</p> <p>lovastatin, simvastatin</p> <p>atorvastatin rosuvastatin</p> <p>Other Lipid-Modifying Agents: lomitapide</p>		<p>CONTRAINDICATED due to potential for serious reactions such as myopathy including rhabdomyolysis.</p> <p>The risk of myopathy including rhabdomyolysis may be increased when protease inhibitors, including REYATAZ, are used in combination with these drugs. Caution should be exercised. Use the lowest possible dose with careful monitoring or consider other HMG-CoA reductase inhibitors such as pravastatin or fluvastatin in combination with REYATAZ (with and without ritonavir).</p> <p>CONTRAINDICATED: Co-administration of REYATAZ because of the potential for risk of markedly increased transaminase level and hepatotoxicity associated with increased plasma concentrations of lomitapide. The mechanism of interaction is CYP3A4 inhibition by atazanavir and/or ritonavir (see 7 WARNINGS AND PRECAUTIONS - Drug Interaction).</p>
<p>Macrolide Antibiotics:</p>	<p>↑ clarithromycin ↓ 14-OH clarithromycin ↑ atazanavir</p>	<p>Increased concentrations of clarithromycin may cause QTc prolongations; therefore, a dose reduction of clarithromycin by 50 % should be considered when it is co-administered with REYATAZ. In addition, concentrations of the active metabolite 14-OH clarithromycin are significantly reduced; consider alternative therapy for indications other than infections due to <i>Mycobacterium avium</i> complex. Caution is advised during coadministration as a high incidence of rash (20 %) was observed in the pharmacokinetic trial in healthy volunteers. Co-administration of REYATAZ/ritonavir with clarithromycin has not been studied.</p>

<p>Oral Contraceptives: ethinyl estradiol and norgestimate or norethindrone</p>	<p>↑ ethinyl estradiol ↑ norethindrone^b</p> <p>↓ ethinyl estradiol ↑ norgestimate^c</p>	<p>Mean concentrations of ethinyl estradiol and norethindrone, when co-administered with REYATAZ, are increased.</p> <p>Administration of REYATAZ/ritonavir with ethinyl estradiol and norgestimate decreases the mean concentration of ethinyl estradiol and increases the mean concentration of 17- deacetyl norgestimate, the active metabolite of norgestimate. If an oral contraceptive is administered with REYATAZ plus ritonavir, it is recommended that the oral contraceptive contain at least 30 mcg of ethinyl estradiol. If REYATAZ is administered without ritonavir, the oral contraceptive should contain no more than 30 mcg of ethinyl estradiol.</p> <p>Use with caution as the effect of increases in concentration of the progestational agent are unknown and could increase the risk of acne, dyslipidemia, and insulin resistance.</p> <p>Co-administration of REYATAZ or REYATAZ /ritonavir with other hormonal contraceptives (e.g., contraceptive patch, contraceptive vaginal ring, or injectable contraceptives) or oral contraceptives containing progestagens other than norethindrone or norgestimate, or less than 25 mcg of ethinyl estradiol have not been studied; therefore, alternative methods of contraception are recommended.</p>
---	--	---

Table 16 Pharmacokinetic Parameters for Atazanavir in the Presence of Co-administered Drugs

Co-administered Drug	Co-administered Drug Dose/Schedule	Atazanavir Dose/Schedule	N ^a	Ratio (90 % Confidence Interval) of Atazanavir Pharmacokinetic Parameters with/without Co-administered Drug; No Effect = 1.00		
				C _{max}	AUC	C _{min}
Atenolol	50 mg once daily, d 7-11 and d19-23	400 mg once daily, d 1-11	19	1.00 (0.89, 1.12)	0.93 (0.85,1.01)	0.74 (0.65, 0.86)
clarithromycin	500 mg BID, d 7-10 and d 18-21	400 mg once daily, d 1-10	29	1.06 (0.93, 1.20)	1.28 (1.16, 1.43)	1.91 (1.66, 2.21)
didanosine (ddI) (buffered tablets) plus stavudine (d4T)	ddl: 200 mg x 1 dose, d4T: 40 mg x 1 dose	400 mg x 1 dose simultaneously with ddl and d4T	31	0.11 (0.06, 0.18)	0.13 (0.08, 0.21)	0.16 (0.10, 0.27)
	ddl: 200 mg x 1 dose, d4T: 40 mg x 1 dose	400 mg x 1 dose 1 hour after ddl + d4T	31	1.12 (0.67, 1.18)	1.03 (0.64, 1.67)	1.03 (0.61, 1.73)
didanosine (ddI) (enteric-coated [EC] capsules) ^b	400 mg d 8 (fed)	400 mg once daily d 2-8	34	1.03 (0.93, 1.14)	0.99 (0.91, 1.08)	0.98 (0.89, 1.08)
	400 mg d 19 (fed)	300 mg/ritonavir 100 mg once daily d 9-19	31	1.04 (1.01, 1.07)	1.00 (0.96, 1.03)	0.87 (0.82, 0.92)
diltiazem	180 mg once daily, d 7-11 and d 19-23	400 mg once daily, d 1-11	30	1.04 (0.96, 1.11)	1.00 (0.95, 1.05)	0.98 (0.90, 1.07)
efavirenz	600 mg once daily, d 7-20	400 mg once daily, d 1-20	27	0.41 (0.33, 0.51)	0.26 (0.22, 0.32)	0.07 (0.05, 0.10)
efavirenz and ritonavir	efavirenz 600 mg once daily 2 h after REYATAZ and ritonavir 100 mg once daily simultaneously with REYATAZ, d 7-20	400 mg once daily, d 1-6 then 300 mg once daily d 7-20	13	1.14 (0.83, 1.58)	1.39 (1.02, 1.88)	1.48 (1.24, 1.76)

efavirenz and ritonavir	600 mg once daily, d 11-24 (pm)	300 mg once daily / ritonavir 100 mg once daily, d 1-10 (pm), then 400 mg once daily / ritonavir 100 mg once daily, d 11-24 (pm), (simultaneous with efavirenz)	14	1.17 (1.08, 1.27)	1.00 (0.91, 1.10)	0.58 (0.49, 0.63)
famotidine	40 mg BID d 7-12 ^c	400 mg once daily d 1-12 ^c	15	0.53 (0.34, 0.82)	0.59 (0.40, 0.87)	0.58 (0.37, 0.89)
	40 mg BID d 7-12 ^d	400 mg once daily (pm) d 1-6, d 7-12 ^d	14	1.08 (0.82, 1.41)	0.95 (0.74, 1.21)	0.79 (0.60, 1.04)
	40 mg BID d 11-20 ^{c,e}	300 mg once daily / ritonavir 100 mg once daily d 1-20 ^{c,e}	14	0.86 (0.79, 0.94)	0.82 (0.75, 0.89)	0.72 (0.64, 0.81)
	20 mg BID, d 11-17	300 mg once daily /ritonavir 100 mg once daily /tenofovir DF 300 mg once daily, d 1- 10 (am), then 300 mg once daily /ritonavir 100 mg once daily /tenofovir DF 300 mg once daily, d 11-17 (am) (simultaneous administration with am famotidine) ^{m, n}	18	0.91 (0.84, 0.99)	0.90 (0.82, 0.98)	0.81 (0.69, 0.94)
	40 mg once daily (pm), d 18-24	300 mg once daily /ritonavir 100 mg once daily /tenofovir DF 300 mg once daily, d 1- 10 (am), then 300 mg once daily /ritonavir 100 mg once daily /tenofovir DF 300 mg once daily, d 18-24 (am) (12h after pm famotidine) ⁿ	20	0.89 (0.81, 0.97)	0.88 (0.80, 0.96)	0.77 (0.63, 0.93)

	40 mg BID, d 18-24	300 mg once daily /ritonavir 100 mg once daily /tenofovir DF 300 mg once daily, d 1-10 (am), then 300 mg once daily /ritonavir 100 mg once daily /tenofovir DF 300 mg once daily, d 18-24 (am) (10h after pm famotidine and 2h before am famotidine) ⁿ	18	0.74 (0.66, 0.84)	0.79 (0.70, 0.88)	0.72 (0.63, 0.83)
fluconazole	200 mg once daily, d 11-20	300 mg once daily /ritonavir 100 mg once daily, d 1-10, then 300 mg once daily /ritonavir 100 mg once daily, d 11-20	29	1.03 (0.95, 1.11)	1.04 (0.95, 1.13)	0.98 (0.85, 1.13)
ketoconazole	200 mg once daily, d 7-13	400 mg once daily, d 1-13	14	0.99 (0.77, 1.28)	1.10 (0.89, 1.37)	1.03 (0.53, 2.01)
nevirapine ^{fg}	200 mg BID, d 1-23	300 mg once daily /ritonavir 100 mg once daily, d 4-13, then 400 mg once daily /ritonavir 100 mg once daily, d 14-23	23, 22 ^h	0.72 (0.60, 0.86) 1.02 (0.85, 1.24)	0.58 (0.48, 0.71) 0.81 (0.65, 1.02)	0.28 (0.20, 0.40) 0.41 (0.27, 0.60)
omeprazole	40 mg once daily d 7-12 ⁱ	400 mg once daily d 1-12	16	0.04 (0.04, 0.05)	0.06 (0.05, 0.07)	0.05 (0.03, 0.07)
	40 mg once daily d 11-20 ⁱ	300 mg once daily/ ritonavir 100 mg once daily d 1-20	15	0.28 (0.24, 0.32)	0.24 (0.21, 0.27)	0.22 (0.19, 0.26)
	20 mg once daily, d 17-23 (am)	300 mg once daily /ritonavir 100 mg once daily, d 7-16 (pm), then 300 mg once daily /ritonavir 100 mg once daily, d 17-23 (pm) ^{o, p}	13	0.61 (0.46, 0.81)	0.58 (0.44, 0.75)	0.54 (0.41, 0.71)

	20 mg once daily, d 17-23 (am)	300 mg once daily /ritonavir 100 mg once daily, d 7-16 (am), then 400 mg once daily /ritonavir 100 mg once daily, d 17-23 (am) ^{q, r}	14	0.69 (0.58, 0.83)	0.70 (0.57, 0.86)	0.69 (0.54, 0.88)
rifabutin	150 mg once daily, d 15-28	400 mg once daily, d 1-28	7	1.34 (1.14, 1.59)	1.15 (0.98, 1.34)	1.13 (0.68, 1.87)
rifampin	600 mg once daily d 17-26	300 mg once daily/ ritonavir 100 mg once daily d 7-26	16	0.47 (0.41, 0.53)	0.28 (0.25, 0.32)	0.02 (0.02, 0.03)
ritonavir ^j	100 mg once daily, d 11-20	300 mg once daily, d 1-20	28	1.86 (1.69, 2.05)	3.38 (3.13, 3.63)	11.89 (10.23, 13.82)
tenofovir DF ^k	300 mg once daily with food d 9-16	400 mg once daily with food d 1-16	34	0.79 (0.73, 0.86)	0.75 (0.70, 0.81)	0.60 (0.52, 0.68)
tenofovir DF ^k and ritonavir	tenofovir DF ^k 300 mg once daily d 15-42	300 mg once daily with ritonavir 100 mg once daily d 1-42	10	0.72 ^l (0.50, 1.05)	0.75 ^l (0.58, 0.97)	0.77 ^l (0.54, 1.10)
voriconazole (Subjects with at least one functional CYP2C19 allele)	200 mg BID, d 2-3, 22-30; 400 mg BID d 1, 21	300 mg/ritonavir 100 mg QD, d 11-30	20	0.87 (0.80, 0.96)	0.88 (0.82, 0.95)	0.80 (0.72, 0.90)
voriconazole (Subjects without a functional CYP2C19 allele)	50 mg BID, d 2-3, 22-30; 100 mg BID d 1, 21	300 mg/ritonavir 100 mg QD, d 11-30	8	0.81 (0.66, 1.00)	0.80 (0.65, 0.97)	0.69 (0.54, 0.87)

^a N = number of subjects

^b 400 mg ddi EC and REYATAZ were administered together with food on Days 8 and 19.

^c Simultaneous administration

^d 10 hr after, 2 hr before famotidine

^e REYATAZ 300 mg plus ritonavir 100 mg once daily co-administered with famotidine 40 mg twice daily resulted in atazanavir geometric mean C_{max} that was similar and AUC and C_{min} values that were 1.79- and 4.46- fold higher relative to REYATAZ 400 mg once daily alone.

^f Study was conducted in HIV-infected individuals.

- ^g Compared with atazanavir 400 mg historical data without nevirapine (n=13), the ratio of geometric means (90 % confidence intervals) for C_{max} , AUC, and C_{min} were 1.42 (0.98, 2.05), 1.64 (1.11, 2.42), and 1.25 (0.66, 2.36), respectively, for atazanavir/ritonavir 300/100 mg; and 2.02 (1.42, 2.87), 2.28 (1.54, 3.38), and 1.80 (0.94, 3.45), respectively, for atazanavir/ritonavir 400/100 mg.
- ^h Parallel group design; n for atazanavir/ritonavir plus nevirapine, n for atazanavir 300 mg/ritonavir 100 mg without nevirapine. Subjects were treated with nevirapine prior to study entry.
- ⁱ Omeprazole was administered on an empty stomach 2 hours before REYATAZ.
- ^j Compared with atazanavir 400 mg once daily historical data, administration of atazanavir/ritonavir 300/100 mg once daily increased the atazanavir geometric mean values of C_{max} , AUC, and C_{min} by 18 %, 103 %, and 671 %, respectively. The geometric mean values of atazanavir pharmacokinetic parameters when co-administered with ritonavir were: C_{max} = 6129 ng/mL, AUC = 57039 ng•h/mL, and C_{min} = 1227 ng/mL.
- ^k Tenofovir disoproxil fumarate. Note that similar results were observed in studies where administration of tenofovir DF and REYATAZ was separated by 12 hours.
- ^l Ratio of atazanavir plus ritonavir plus tenofovir DF to atazanavir plus ritonavir. Atazanavir 300 mg plus ritonavir 100 mg results in higher atazanavir exposure than atazanavir 400 mg (see footnote ^g).
- ^m Similar results were noted when famotidine 20 mg BID was administered 2 hours after and 10 hours before atazanavir 300 mg and ritonavir 100 mg plus tenofovir DF 300 mg.
- ⁿ Atazanavir/ritonavir/tenofovir DF was administered after a light meal.
- ^o Omeprazole 20 mg was administered 30 minutes prior to a light meal in the morning and REYATAZ 300 mg plus ritonavir 100 mg in the evening after a light meal, separated by 12 hours from omeprazole.
- ^p REYATAZ 300 mg plus ritonavir 100 mg once daily separated by 12 hours from omeprazole 20 mg daily resulted in increases in atazanavir geometric mean AUC (10 %) and C_{min} (2.4-fold), with a decrease in C_{max} (29 %) relative to REYATAZ 400 mg once daily in the absence of omeprazole (study days 1–6).
- ^q Omeprazole 20 mg was given 30 min prior to a light meal in the morning and REYATAZ 400 mg plus ritonavir 100 mg once daily after a light meal, 1 hour after omeprazole. Effects on atazanavir concentrations were similar when REYATAZ 400 mg plus ritonavir 100 mg was separated from omeprazole 20 mg by 12 hours.
- ^r REYATAZ 400 mg plus ritonavir 100 mg once daily administered with omeprazole 20 mg once daily resulted in increases in atazanavir geometric mean AUC (32 %) and C_{min} (3.3-fold), with a decrease in C_{max} (26 %) relative to REYATAZ 400 mg once daily in the absence of omeprazole (study days 1-6).

Effect of Atazanavir on the Pharmacokinetics of Other Agents

Table 17 Pharmacokinetic Parameters for Co-administered Drugs in the Presence of Atazanavir						
Co-administered Drug	Co-administered Drug Dose/Schedule	Atazanavir Dose/Schedule	N ^a	Ratio (90 % Confidence Interval) of Co-administered Drug Pharmacokinetic Parameters with/without Atazanavir; No Effect = 1.00		
				C_{max}	AUC	C_{min}

acetaminophen	1 gm BID, d 1-20	300 mg once daily /ritonavir 100 mg once daily, d 11-20	10	0.87 (0.77, 0.99)	0.97 (0.91, 1.03)	1.26 (1.08, 1.46)
atenolol	50 mg once daily, d 7-11 and d 19-23	400 mg once daily, d 1-11	19	1.34 (1.26, 1.42)	1.25 (1.16, 1.34)	1.02 (0.88, 1.19)
buprenorphine	16 mg once daily naloxone 4 mg once daily	300 mg once daily/ritonavir 100 mg once daily x 5 days	10	buprenorphine: 1.37 norbuprenorphine: 16.1	buprenorphine: 1.67 norbuprenorphine: 2.05	buprenorphine: 1.69 norbuprenorphine: 2.01
	once daily stable maintenance dose with naloxone	400 mg once daily x 5 days	10	buprenorphine: 1.64 norbuprenorphine: 1.36	buprenorphine: 1.93 norbuprenorphine: 1.76	buprenorphine: 1.99 norbuprenorphine: 1.64
clarithromycin	500 mg BID, d 7-10 and d 18-21	400 mg once daily, d 1-10	21	1.50 (1.32, 1.71) OH- clarithromycin: 0.28 (0.24, 0.33)	1.94 (1.75, 2.16) OH- clarithromycin: 0.30 (0.26, 0.34)	2.60(2.35, 2.88) OH- clarithromycin: 0.38 (0.34, 0.42)
didanosine (ddI) (buffered tablets) plus stavudine (d4T)	ddI: 200 mg x 1 dose d4T: 40 mg x 1 dose	400 mg x 1 dose simultaneous with ddI and d4T	31	ddI: 0.92 (0.84, 1.02) d4T: 1.08 (0.96, 1.22)	ddI: 0.98 (0.92, 1.05) d4T: 1.00 (0.97, 1.03)	NA d4T: 1.04 (0.94, 1.16)
didanosine (ddI) (enteric coated [EC] capsules) ^b	400 mg d 1 (fasted), 8 (fed)	400 mg once daily, d 2-8	34	0.64 (0.55, 0.74)	0.66 (0.60, 0.74)	1.13 (0.91, 1.41)
	400 mg d 1 (fasted), 19 (fed)	300 mg once daily/ritonavir 100 mg once daily, d 9-19	31	0.62 (0.52, 0.74)	0.66 (0.59, 0.73)	1.25 (0.92, 1.69)

diltiazem	180 mg once daily, d 7-11 and d 19-23	400 mg once daily, d 1-11	28	1.98 (1.78, 2.19) desacetyl- diltiazem: 2.72 (2.44, 3.03)	2.25 (2.09, 2.16) desacetyl- diltiazem: 2.65 (2.45, 2.87)	2.42 (2.14, 2.73) desacetyl- diltiazem: 2.21 (2.02, 2.42)
ethinyl estradiol & norethindrone ^c	Ortho-Novum® 7/7/7 once daily, d 1-29	400 mg once daily, d 16-29	19	ethinyl estradiol: 1.15 (0.99, 1.32) norethindrone: 1.67 (1.42, 1.96)	ethinyl estradiol: 1.48 (1.31, 1.68) norethindrone: 2.10 (1.68, 2.62)	Ethinyl estradiol: 1.91 (1.57, 2.33) norethindrone: 3.62 (2.57, 5.09)
ethinyl estradiol & norgestimate ^d	Tri-Cyclen® once daily, d 1-28, then Tri-Cyclen® LO once daily, d 29-42 ^e	300 mg once daily /ritonavir 100 mg once daily, d 29-42	13	ethinyl estradiol: 0.84 (0.74, 0.95) 17-deacetyl norgestimate: ^f 1.68 (1.51, 1.88)	ethinyl estradiol: 0.81 (0.75, 0.87) 17-deacetyl norgestimate: ^f 1.85 (1.67, 2.05)	ethinyl estradiol: 0.63 (0.55, 0.71) 17-deacetyl norgestimate: ^f 2.02 (1.77, 2.31)
fluconazole	200 mg once daily, d 1-20	300 mg once daily /ritonavir 100 mg once daily, d 11-20	30	1.05 (0.99, 1.10)	1.08 (1.02, 1.15)	1.07 (1.00, 1.15)
glecaprevir/ pibrentasvir	300 mg glecaprevir	300 mg QD/ritonavir 100 mg QD	12	≥ 4.06 ^g (3.15, 5.23)	≥ 6.53 ^g (5.24, 8.14)	≥ 14.3 ^g (9.85, 20.7)
	120 mg pibrentasvir	300 mg QD/ritonavir 100 mg QD	12	≥ 1.29 ^g (1.15, 1.45)	≥ 1.64 ^g (1.48, 1.82)	≥ 2.29 ^g (1.95, 2.68)
methadone	stable maintenance dose, d 1-15	400 mg once daily, d 2-15	16	(R)-methadone ^h 0.91 (0.84, 1.0) total: 0.85 (0.78, 0.93)	(R)-methadone ^h 1.03 (0.95, 1.10) total: 0.94 (0.87, 1.02)	(R)-methadone ^h 1.11 (1.02, 1.20) total: 1.02 (0.93, 1.12)

nevirapine ^{ij}	200 mg BID, d 1-23	300 mg once daily / ritonavir 100 mg once daily, d 4-13, then 400 mg once daily / ritonavir 100 mg once daily, d 14-23	23	1.17 (1.09, 1.25) 1.21 (1.11, 1.32)	1.25 (1.17, 1.34) 1.26 (1.17, 1.36)	1.32 (1.22, 1.43) 1.35 (1.25, 1.47)
omeprazole ^k	40 mg single dose d 7 and d 20	400 mg once daily d 1-12	16	1.24 (1.04, 1.47)	1.45 (1.20, 1.76)	NA
rifabutin	300 mg once daily, d 1-10 then 150 mg once daily, d 11-20	600 mg once daily ^l d 11-20	3	1.18 (0.94, 1.48) 25-O-desacetyl- rifabutin: 8.20 (5.90, 11.40)	2.10 (1.57, 2.79) 25-O-desacetyl- rifabutin: 22.01 (15.97, 30.34)	3.43 (1.98, 5.96) 25-O-desacetyl- rifabutin: 75.6 (30.1, 190.0)
	150 mg twice weekly, d 1-15	300 mg once daily / ritonavir 100 mg once daily, d 1-17	7	2.49 ^m (2.03, 3.06) 25-O-desacetyl- rifabutin: 7.77 (6.13, 9.83)	1.48 ^m (1.19, 1.84) 25- O-desacetyl- rifabutin: 10.90 (8.14, 14.61)	1.40 ^m (1.05, 1.87) 25- O-desacetyl- rifabutin: 11.45 (8.15, 16.10)
Rosiglitazone ⁿ	4 mg single dose, d 1, 7, 17	400 mg once daily D 2-7, then 300 mg once daily / ritonavir 100 mg once daily, d 8-17	14	1.08 (1.03, 1.13) 0.97 (0.91, 1.04)	1.35 (1.26, 1.44) 0.83 (0.77, 0.89)	NA NA
saquinavir (soft gelatin capsules)	1200 mg once daily, d 1-13	400 mg once daily, d 7-13	7	4.39 (3.24, 5.95)	5.49 (4.04, 7.47)	6.86 (5.29, 8.91)

sofosbuvir/ velpatasvir/ voxilaprevir	400 mg sofosbuvir single dose	300 mg/ 100 mg ritonavir single dose	15	1.29 (1.09, 1.52) sofosbuvir metabolite GS- 331007 1.05 (0.99, 1.12)	1.40 (1.25, 1.57) sofosbuvir metabolite GS- 331007 1.25 (1.16, 1.36)	NA
	100 mg velpatasvir single dose	300 mg/ 100 mg ritonavir single dose	15	1.29 (1.07, 1.56)	1.93 (1.58, 2.36)	NA
	100 mg voxilaprevir single dose	300 mg/ 100 mg ritonavir single dose	15	4.42 (3.65, 5.35)	4.31 (3.76, 4.93)	NA
tenofovir DF ^o	300 mg once daily with food d 9-16 and d 24-30	400 mg once daily with food d 1-16	33	1.14 (1.08, 1.20)	1.24 (1.21, 1.28)	1.22 (1.15, 1.30)
	300 mg once daily d 1-7 (pm) d 25-34 (pm) ^o	300 mg once daily/ritonavir 100 mg once daily d 25-34 (am) ^p	12	1.34 (1.20, 1.51)	1.37 (1.30, 1.45)	1.29 (1.21, 1.36)
voriconazole (Subjects with at least one functional CYP2C19 allele)	200 mg BID, d 2-3, 22-30; 400 mg BID d 1, 21	300 mg/ ritonavir 100 mg QD, d 11-30	20	0.90 (0.78, 1.04)	0.67 (0.58, 0.78)	0.61 (0.51, 0.72)
voriconazole (Subjects without a functional CYP2C19 allele)	50 mg BID, d 2-3, 22-30; 100 mg BID d 1, 21	300 mg/ ritonavir 100 mg QD, d 11-30	8	4.38 (3.55, 5.39)	5.61 (4.51, 6.99)	7.65 (5.71, 10.2)
lamivudine + zidovudine	150 mg lamivudine + 300 mg zidovudine BID d 1-12	400 mg once daily, d 7-12	19	lamivudine: 1.04 (0.92, 1.16) Zidovudine: 1.05 (0.88, 1.24) Zidovudine glucuronide: 0.95 (0.88, 1.02)	Lamivudine: 1.03 (0.98, 1.08) Zidovudine: 1.05 (0.96, 1.14) Zidovudine glucuronide: 1.00 (0.97, 1.03)	Lamivudine: 1.12 (1.04, 1.21) zidovudine: 0.69 (0.57, 0.84) zidovudine glucuronide: 0.82 (0.62, 1.08)

^a N = number of subjects

^b 400 mg ddi EC and REYATAZ were administered together with food on Days 8 and 19.

- ^c Upon further dose normalization of ethinyl estradiol 25 mcg with atazanavir relative to ethinyl estradiol 35 mcg without atazanavir, the ratio of geometric means (90 % confidence intervals) for C_{max}, AUC, and C_{min} were 0.82 (0.73, 0.92), 1.06 (0.95, 1.17), and 1.35 (1.11, 1.63), respectively.
 - ^d Upon further dose normalization of ethinyl estradiol 35 mcg with atazanavir/ritonavir relative to ethinyl estradiol 25 mcg without atazanavir/ritonavir, the ratio of geometric means (90 % confidence intervals) for C_{max}, AUC, and C_{min} were 1.17 (1.03, 1.34), 1.13 (1.05, 1.22), and 0.88 (0.77, 1.00), respectively.
 - ^e All subjects were on a 28-day lead-in period; one full cycle of Ortho Tri-Cyclen® Ortho Tri-Cyclen® contains 35 mcg of ethinyl estradiol. Ortho Tri-Cyclen® LO contains 25 mcg of ethinyl estradiol. Results were dose normalized to an ethinyl estradiol dose of 35 mcg.
 - ^f 17-deacetyl norgestimate is the active component of norgestimate.
 - ^g Effect of atazanavir and ritonavir on the first dose of glecaprevir and pibrentasvir is reported.
 - ^h (R)-methadone is the active isomer of methadone.
 - ⁱ Study was conducted in HIV-infected individuals.
 - ^j Subjects were treated with nevirapine prior to study entry.
 - ^k Omeprazole was used as a metabolic probe for CYP2C19. Omeprazole was given 2 hours after REYATAZ on Day 7; and was given alone 2 hours after a light meal on Day 20.
 - ^l Not the recommended therapeutic dose of atazanavir.
 - ^m When compared to rifabutin 150 mg once daily alone d1-10 (n=14). Total of rifabutin + 25-O-desacetyl-rifabutin: AUC 2.19 (1.78, 2.69).
 - ⁿ Rosiglitazone used as a probe substrate for CYP2C8.
 - ^o Tenofovir disoproxil fumarate. Note that similar results were observed in studies where administration of tenofovir DF and REYATAZ was separated by 12 hours.
 - ^p Administration of tenofovir DF and REYATAZ was temporally separated by 12 hours.
- NA = not available

9.5 Drug-Food Interactions

See [10 CLINICAL PHARMACOLOGY Food Effects](#).

9.6 Drug-Herb Interactions

Concomitant use of REYATAZ and St. John's wort (*Hypericum perforatum*), or products containing St. John's wort, is contraindicated. Co-administration of protease inhibitors, including REYATAZ, with St. John's wort is expected to substantially decrease concentrations of the protease inhibitor and may result in suboptimal levels of atazanavir and lead to loss of virologic response and possible resistance to atazanavir or to the class of protease inhibitors.

10 CLINICAL PHARMACOLOGY

10.1 Mechanism of Action

REYATAZ (atazanavir) is an azapeptide HIV-1 protease inhibitor. The compound selectively inhibits the virus-specific processing of viral Gag and Gag-Pol polyproteins in HIV-1 infected cells, thus preventing formation of mature virions.

10.2 Pharmacodynamics

Electrocardiogram: Effect on PR and QT intervals

Concentration - and dose - dependent prolongation of the PR interval in the electrocardiogram has been observed in healthy volunteers receiving atazanavir. In a placebo-controlled study (AI424-076), the mean

(+ / -SD) maximum change in PR interval from the pre-dose value was 24 (+ / -15 msec) following oral dosing with 400 mg of atazanavir (n = 65) compared to 13 (+11 msec) following dosing with placebo (n = 67). The PR interval prolongations in this study were asymptomatic. There is limited information on the potential for pharmacodynamic interaction in humans between atazanavir and other drugs that prolong the PR interval of the electrocardiogram (see [7 WARNINGS AND PRECAUTIONS](#)).

Electrocardiographic effects of atazanavir were determined in a clinical pharmacology study of 72 healthy subjects. Oral doses of 400 mg and 800 mg were compared with placebo; there was no concentration - dependent effect of atazanavir on the QTc interval (using Fridericia's correction). In 1793 HIV-infected patients receiving antiretroviral regimens, QTc prolongation was comparable in the atazanavir and comparator regimens. No atazanavir-treated healthy subject or HIV-infected patient had a QTc interval > 500 msec.

10.3 Pharmacokinetics

The pharmacokinetics of atazanavir were evaluated in healthy adult volunteers and in HIV-infected patients, after administration of REYATAZ 400 mg once daily and after administration of REYATAZ 300 mg with ritonavir 100 mg once daily.

Table 18 Steady-State Pharmacokinetics of Atazanavir in Healthy Adult Subjects or HIV-Infected Patients in the Fed State				
Parameter	400 mg once daily		300 mg with ritonavir 100 mg once daily	
	Healthy Subjects (n = 14)	HIV-Infected Patients (n = 13)	Healthy Subjects (n = 28)	HIV-Infected Patients (n = 10)
C_{max} (ng/mL)				
Geometric mean (CV %)	5199 (26)	2298 (71)	6129 (31)	4422 (58)
Mean (SD)	5358 (1371)	3152 (2231)	6450 (2031)	5233 (3033)
T_{max} (h)				
Median	2.5	2.0	2.7	3.0
AUC (ng·h/mL)				
Geometric mean (CV %)	28132 (28)	14874 (91)	57039 (37)	46073 (66)
Mean (SD)	29303 (8263)	22262 (20159)	61435 (22911)	53761 (35294)
T-half (h)				
Mean (SD)	7.9 (2.9)	6.5 (2.6)	18.1 (6.2) ^a	8.6 (2.3)
C_{min} (ng/mL)				
Geometric mean (CV %)	159 (88)	120 (109)	1227 (53)	636 (97)
Mean (SD)	218 (191)	273 (298) ^b	1441 (757)	862 (838)

^a n = 26

^b n = 12

Absorption

Atazanavir is rapidly absorbed with a T_{max} of approximately 2.5 hours. Atazanavir demonstrates nonlinear pharmacokinetics with greater than dose-proportional increases in AUC and C_{max} values over the dose range of 200-800 mg once daily. Steady-state is achieved between Days 4 and 8, with an accumulation of approximately 2.3-fold.

Figure 1: displays the mean plasma concentrations of atazanavir on Day 29 (steady state) following atazanavir 400 mg once daily (as two 200 mg capsules) with a light meal and after atazanavir 300 mg (as two 150 mg capsules) with ritonavir 100 mg once daily with a light meal in HIV-infected adult patients.

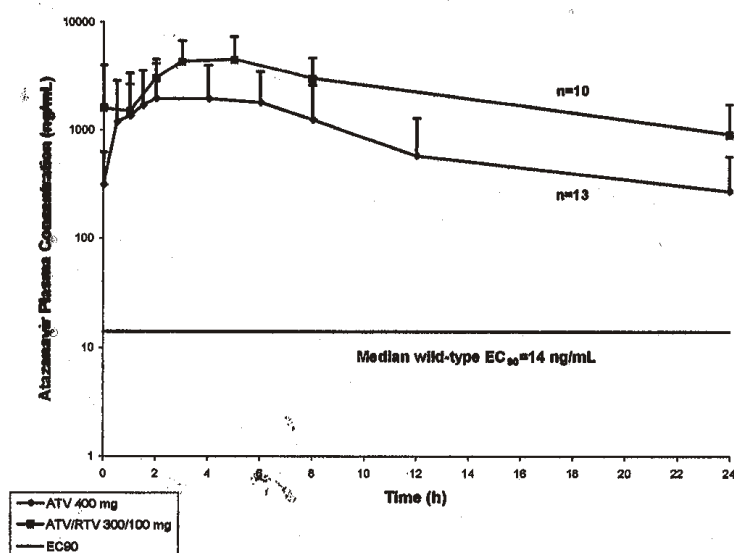


Figure 1: Mean (SD) Steady-state Plasma Concentrations of Atazanavir 400 mg (n = 13) and 300 mg with Ritonavir (n = 10) for HIV-infected Adult Patients

Food Effect

Administration of a single 400 mg dose of atazanavir with a light meal (357 kcal, 8.2 g fat, 10.6 g protein) resulted in a 70 % increase in AUC and 57 % increase in C_{max} relative to the fasting state. Administration of a single 400 mg dose of atazanavir with a high fat meal (721 kcal, 37.3 g fat, 29.4 g protein) resulted in a mean increase in AUC of 35 % with no change in C_{max} relative to the fasting state. Administration of REYATAZ with either a light meal or high-fat meal decreased the coefficient of variation of AUC and C_{max} by approximately one half compared to the fasting state. Thus, REYATAZ is taken with food in order to enhance its bioavailability and reduce the pharmacokinetic variability.

Co-administration of REYATAZ and ritonavir with food optimizes the bioavailability of atazanavir. Co-administration of a single 300 mg dose of REYATAZ and a 100 mg dose of ritonavir with a light meal (336 total kcal, 5.1 g fat, 9.3 g protein and 63.3 g carbohydrates) resulted in a 33 % increase in the AUC and a

40 % increase in both the C_{\max} and the 24-hour concentration of atazanavir relative to the fasting state. Co-administration with a high-fat meal (951 total kcal, 54.7 g fat, 35.9 g protein and 77.9 g carbohydrates) did not affect the AUC of atazanavir relative to fasting conditions and the C_{\max} was within 11 % of fasting values. The 24-hour concentration following a high-fat meal was increased by approximately 33 % due to delayed absorption; the median T_{\max} increased from 2.0 to 5.0 hours. Co-administration of REYATAZ with ritonavir with either a light or a high-fat meal decreased the coefficient of variation of AUC and C_{\max} by approximately 25 % compared to the fasting state.

Distribution:

Atazanavir is 86 % bound to human serum proteins and protein binding is independent of concentration. Atazanavir binds to both alpha-1-acid glycoprotein (AAG) and albumin to a similar extent (89 % and 86 %, respectively). In a multiple-dose study in HIV-infected patients dosed with atazanavir 400 mg once daily with a light meal for 12 weeks, atazanavir was detected in the cerebrospinal fluid and semen. The cerebrospinal fluid/plasma ratio for atazanavir (n = 4) ranged between 0.0021 and 0.0226 and seminal fluid/plasma ratio (n = 5) ranged between 0.11 and 4.42.

Metabolism:

Studies in humans and *in vitro* studies using human liver microsomes have demonstrated that atazanavir is principally metabolized by CYP3A4 isozyme to oxygenated metabolites, which are then excreted in the bile as either free or glucuronidated metabolites. Additional minor metabolic pathways consist of N-dealkylation, hydrolysis and oxygenation with dehydrogenation.

Two minor metabolites of atazanavir in plasma have been characterized. Neither metabolite demonstrated *in vitro* antiviral activity.

Elimination

Following a single 400 mg dose of ^{14}C -atazanavir, 79 % and 13 % of the total radioactivity was recovered in the feces and urine, respectively. Unchanged drug accounted for approximately 20 % and 7 % of the administered dose in the feces and urine, respectively. The mean elimination half-life of atazanavir in healthy volunteers (n=214) and HIV-infected adult patients (n=13) was approximately 7 hours at steady state following a dose of 400 mg daily with a light meal.

Special Populations and Conditions

- **Pediatrics** (from 6 to <18 years of age) The pharmacokinetic data from pediatric patients receiving REYATAZ Capsules with ritonavir based on body surface area are presented in Table 19.

Table 19 -Steady-State Pharmacokinetics of Atazanavir with ritonavir in HIV Infected Pediatric Patients (6 to < 18 years of age) in the Fed State		
	205 mg/m ² atazanavir with 100 mg/m ² ritonavir once daily	
	Age range (years)	
	At least 6 to 13 (n=17)	At least 13 to 18 (n=10)
Dose mg		
Median	200	400

[min-max]	[150-400]	[250-500]
C _{max} ng/mL		
Geometric Mean (CV %)	4451 (33)	3711 (46)
AUC ng•h/mL		
Geometric Mean (CV %)	42503 (36)	44970 (34)
C _{min} ng/mL		
Geometric Mean (CV %)	535 (62)	1090 (60)

- **Geriatrics** A study of the pharmacokinetics of atazanavir was performed in young (n=29; 18-40 years) and elderly (n=30; ≥ 65 years) healthy subjects. There were no clinically important pharmacokinetic differences observed due to age.
- **Sex** A study of the pharmacokinetics of atazanavir was performed in young (n=29; 18-40 years) and elderly (n=30; ≥ 65 years) healthy subjects. There were no clinically important pharmacokinetic differences observed due to gender.
- **Pregnancy and Breast-feeding** The pharmacokinetic data from HIV-infected pregnant women receiving REYATAZ Capsules with ritonavir are presented in Table 20.

Table 20 Steady-State Pharmacokinetics of Atazanavir with ritonavir in HIV-Infected Pregnant Women in the Fed State			
atazanavir 300 mg with ritonavir 100 mg			
Pharmacokinetic Parameter	2nd Trimester (n=9)	3rd Trimester (n=20)	Postpartum ^a (n=36)
C _{max} ng/mL	3729.09	3291.46	5649.10
Geometric mean (CV %)	(39)	(48)	(31)
AUC ng•h/mL	34399.1	34251.5	60532.7
Geometric mean (CV %)	(37)	(43)	(33)
C _{min} ng/mL ^b	663.78	668.48	1420.64
Geometric mean (CV %)	(36)	(50)	(47)

^a Atazanavir peak concentrations and AUCs were found to be approximately 26–40% higher during the postpartum period (4–12 weeks) than those observed historically in HIV-infected, non-pregnant patients. Atazanavir plasma trough concentrations were approximately 2-fold higher during the postpartum period when compared to those observed historically in HIV-infected, non-pregnant patients.

^b C_{min} is concentration 24 hours post-dose.

- **Ethnic Origin** A study of the pharmacokinetics of atazanavir was performed in young (n=29; 18-40 years) and elderly (n=30; ≥ 65 years) healthy subjects. There are insufficient data to determine whether there are any effects of race on the pharmacokinetics of atazanavir.
- **Hepatic Insufficiency** Atazanavir is metabolized and eliminated primarily by the liver. Atazanavir has been studied in adult patients with moderate to severe hepatic impairment (14 Child-Pugh B and 2 Child-Pugh C) after a single 400-mg dose. The mean AUC (0-∞) was 42 % greater in patients with impaired hepatic function than in healthy volunteers. The mean half-life of atazanavir in hepatically impaired patients was 12.1 hours compared to 6.4 hours in healthy volunteers. Increased concentrations of atazanavir are expected in patients with moderately or severely impaired hepatic function. The pharmacokinetics of REYATAZ in combination with ritonavir have not been studied in subjects with hepatic impairment. REYATAZ should not be administered to patients with severe hepatic impairment. REYATAZ/ritonavir is not

recommended for use in patients with hepatic impairment (see [4 DOSAGE AND ADMINISTRATION](#) and [7 WARNINGS AND PRECAUTIONS](#)).

- **Renal Insufficiency** In healthy subjects, approximately 7 % of the dose of atazanavir is eliminated unchanged in the urine. REYATAZ has been studied in adult subjects with severe renal impairment (n=20), including those on hemodialysis, at multiple doses of 400 mg once daily. The mean atazanavir C_{max} was 9 % lower, AUC was 19 % higher, and C_{min} was 96 % higher in subjects with severe renal impairment not undergoing hemodialysis (n=10), than in age, weight, and gender matched subjects with normal renal function. Atazanavir was not appreciably cleared during hemodialysis. In a 4-hour dialysis session, 2.1 % of the administered dose was removed. Subjects on hemodialysis appeared to display lower exposures as compared to healthy subjects and renally-impaired subjects without hemodialysis. The geometric means for ATV AUC, C_{max} and C_{min} , for REYATAZ administered immediately following dialysis in subjects on hemodialysis (n=10) were 42 %, 37 % and 54 % lower, respectively, relative to subjects with normal renal function. When REYATAZ was administered 2 hours before a 4-hour hemodialysis session, the geometric means for ATV AUC, C_{max} and C_{min} in hemodialysis subjects were 28 %, 25 % and 43 % lower, respectively, than subjects with normal renal function. The mechanism of this decrease is unknown (see [4 DOSAGE AND ADMINISTRATION](#)).

- **Obesity** See Fat Distribution ([7 WARNINGS AND PRECAUTIONS](#))

The effects of co-administered drugs on the AUC, C_{max} and C_{min} of atazanavir are summarized in Table 16.

11 STORAGE, STABILITY AND DISPOSAL

REYATAZ capsules should be stored at 25°C (77°F); excursions permitted to 15-30°C (59-86°F). Protect from moisture.

12 SPECIAL HANDLING INSTRUCTIONS

N/A

PART II: SCIENTIFIC INFORMATION

13 PHARMACEUTICAL INFORMATION

Drug Substance

Proper Name: Atazanavir sulfate

Chemical Name: (3S,8S,9S,12S)-3,12-Bis(1,1-dimethylethyl)-8-hydroxy-4,11-dioxo-9-(phenylmethyl)-6-[[4-(2-pyridinyl)phenyl]methyl]-2,5,6,10,13-pentaazatetradecanedioic acid dimethyl ester, sulfate (1:1)

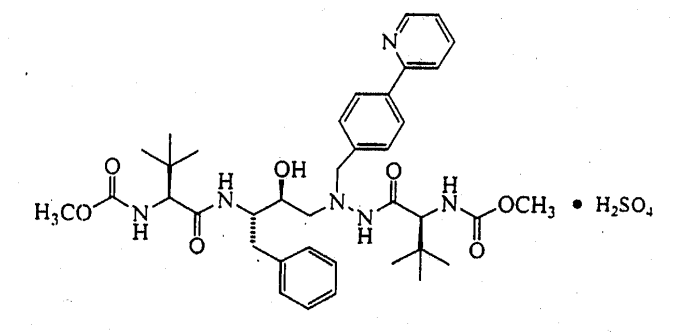
Molecular formula

and molecular mass: $C_{38}H_{52}N_6O_7 \cdot H_2SO_4$

802.9 (sulfuric acid salt)

704.9 (free base)

Structural formula:



Physicochemical properties:

Description: REYATAZ (atazanavir sulfate) is an azapeptide inhibitor of HIV-1 protease. Atazanavir sulfate is a white to pale yellow powder.

Solubility: It is slightly soluble in water (4-5 mg/mL, free base equivalent).

pH: The pH of a saturated solution in water being about 1.9 at $24 \pm 3^\circ\text{C}$.

14 CLINICAL TRIALS

14.1 Clinical Trials by Indication

Antiretroviral Treatment-Naive Adult Patients

Study AI424-138: a 96 Week study comparing the antiviral efficacy and safety of atazanavir/ritonavir with lopinavir/ritonavir, each in combination with fixed-dose tenofovir/emtricitabine in HIV-1 infected

treatment naive subjects.

Table 21 Summary of patient demographics for clinical trial study AI424-138 in Antiretroviral Treatment-Naive Adult Patients

Study #	Study Design	Dosage, route of administration and duration	Study Subjects (n)	Mean age (Range)	Sex
AI424-138	open label, randomized, multicenter	REYATAZ 300 mg + ritonavir 100 mg (once daily) with tenofovir DF/emtricitabine (once daily) ^a Lopinavir 400 mg + ritonavir 100 mg (twice daily) with tenofovir DF/emtricitabine (once daily) ^a 96 Weeks	n = 440 n = 443	36 years (19–72)	69 % male 31 % female

^a As a fixed-dose combination: 300 mg tenofovir DF, 200 mg emtricitabine once daily

Study AI424-138: A 96 Week study comparing the antiviral efficacy and safety of atazanavir/ritonavir with lopinavir/ritonavir, each in combination with fixed-dose tenofovir / emtricitabine in HIV-1 infected treatment naive subjects Study AI424-138 is a 96 Week open label, randomized, multicenter study, comparing REYATAZ (300 mg once daily) with ritonavir (100 mg once daily) to lopinavir plus ritonavir (400/100 mg twice daily), each in combination with fixed-dose tenofovir DF plus emtricitabine (300/200 mg once daily), in 883 antiretroviral treatment-naive patients. Patients had a mean age of 36 years (range 19 – 72), 48 % were Caucasian, 18 % Black, 9 % Asian, 24 % Hispanic/Mestizo/mixed race and 69 % were male. The median baseline plasma CD4+ cell count was 205 cells/mm³ (range 2 to 810 cells/mm³) and the mean baseline plasma HIV-1 RNA level was 4.94 log₁₀ copies/mL (range: 2.60 to 5.88 log₁₀ copies/mL).

Study Results

Treatment response and outcomes through Week 48 and Week 96 are presented in Table 22.

Table 22 Outcomes of Randomized Treatment Through Week 48 and Week 96 (Study AI424-138)				
Outcome	REYATAZ 300 mg + ritonavir 100 mg (once daily) with tenofovir DF/emtricitabine (once daily) ^a (n = 440)		Lopinavir 400 mg + ritonavir 100 mg (twice daily) with tenofovir DF/emtricitabine (once daily) ^a (n = 443)	
	48 Weeks	96 Weeks	48 Weeks	96 Weeks
Responder ^b	78 % ^c	75 % ^d	76 % ^c	69 % ^d

Virologic failure ^e	13 %	9 %	10 %	11 %
Rebound	4 %	7 %	4 %	9 %
Never suppressed through Week 48 or Week 96	9 %	2 %	6 %	1 %
Death	1 %	1 %	< 1 %	< 1 %
Discontinued due to adverse event	2 %	3 %	3 %	5 %
Discontinued for other reasons ^f	6 %	12 %	9 %	15 %

^a As a fixed-dose combination: 300 mg tenofovir DF, 200 mg emtricitabine once daily.

^b Patients achieved confirmed HIV RNA < 50 copies/mL at Week 48. Roche Amplicor®, v1.5 ultra-sensitive assay.

^c Pre-specified ITT analysis using as-randomized cohort: ATV/RTV 78 % and LPV/RTV 76 % [difference estimate: 1.7 (95 % confidence interval: -3.8, 7.1)].

^d Pre-specified ITT analysis using as-randomized cohort: ATV/RTV 74 % and LPV/RTV 68 % [difference estimate: 6.1 (95 % confidence interval: 0.3, 12.0)].

^e Includes viral rebound and failure to achieve confirmed HIV RNA < 50 copies/mL through Week 48 and Week 96, respectively.

^f Includes lost to follow-up, patient's withdrawal, noncompliance, protocol violation, and other reasons.

The proportion of responders among patients with high viral loads (i.e., baseline HIV RNA \geq 100,000 copies/mL) were comparable for the REYATAZ/ritonavir (164 of 223 patients, 74 % at 48 weeks and 165 of 223 patients, 74 % at 96 weeks) and lopinavir/ritonavir 161 of 222 patients, 73 % at 48 weeks and 149 of 222 patients, 67 % at 96 weeks) arms. The median increase from baseline in CD4+ cell count was 191 (48 weeks) and 261 (96 weeks) cells/mm³ for the REYATAZ/ritonavir arm and 200 (48 weeks) and 273 (96 weeks) cells/mm³ for the lopinavir/ritonavir arm.

Study AI424-034: REYATAZ (atazanavir) once daily compared to efavirenz once daily, each in combination with fixed dose lamivudine + zidovudine twice daily

Table 23 Summary of patient demographics for clinical trial Study AI424-034 in Antiretroviral Treatment-Naive Adult Patients

Study #	Study design	Dosage, route of administration and duration	Study subjects (n)	Mean age (Range)	Sex
AI424-034	randomized, double-blind, multicenter	REYATAZ 400 mg once daily + lamivudine + zidovudine ^d	n = 405	34 years (18 to 73)	65 % male 35 % female
		efavirenz 600 mg once daily + lamivudine + zidovudine ^d	n = 443		
		48 Weeks			

^a As a fixed-dose combination: 150 mg lamivudine, 300 mg zidovudine twice daily.

Study AI424-034 was a randomized, double-blind, multicenter trial comparing REYATAZ (400 mg once daily) (n=405) to efavirenz (600 mg once daily) (n=405), each in combination with a fixed dose combination of lamivudine (3TC) (150 mg) and zidovudine (ZDV) (300 mg) given twice daily, in 810 antiretroviral treatment-naive patients. Patients had a mean age of 34 years (range: 18 to 73), 36 % were Hispanic, 33 % were Caucasian, and 65 % were male. The mean baseline CD4 cell count was 321 cells/mm³ (range: 64 to 1424 cells/mm³) and the mean baseline plasma HIV-1 RNA level was 4.8 log₁₀ copies/mL (range: 2.2 to 5.9 log₁₀ copies/mL).

Study Results

Table 24 Outcomes of Randomized Treatment Through Week 48 (Study AI424-034)		
Outcome	REYATAZ 400 mg once daily + lamivudine + zidovudine ^d (n = 405)	efavirenz 600 mg once daily + lamivudine + zidovudine ^d (n = 405)
Responder by TRWPF analysis ^a LOQ<400 copies/mL (< 50 copies/mL)	67 % (31 %)	63 % (36 %)
Virologic failure ^b	20 %	19 %
Rebound	13 %	11 %
Never suppressed through Week 48	7 %	7 %
Death or Disease Progression	< 1 %	< 1 %
Discontinued due to adverse event	6 %	9 %
Discontinued for other reasons ^c	6 %	9 %

^a The TRWPF defined as responders patients who achieved and maintained confirmed HIV RNA < 400 copies/mL (< 50 copies/mL) through week 48 without intervening replicated rebound, CDC Class C AIDS events, or

treatment discontinuation. ATV-EFV (95 % CI): 3.8 (-2.8, 10.3); ATV is similar to EFV as the lower 95 % confidence interval is > - 12 %, the pre-defined criteria for similarity. Roche Amplicor® HIV-1 Monitor™ Assay, test version 1.0 or 1.5 as geographically appropriate.

- ^b Includes confirmed viral rebound and failure to achieve confirmed HIV RNA < 400 copies/mL through Week 48.
- ^c Includes lost to follow-up, patient's withdrawal, noncompliance, protocol violation and other reasons.
- ^d As a fixed-dose combination: 150 mg lamivudine, 300 mg zidovudine twice daily.

The primary endpoint for this study was the proportion of treated patients who achieved and maintained confirmed HIV RNA < 400 copies/mL through Week 48.

Through 48 weeks of therapy, there was a similar proportion of patients with HIV RNA < 400 copies/mL in the REYATAZ arm compared to the efavirenz arm (67 % vs. 63 %, respectively). Virologic failure was the most frequent reason for treatment failure on both regimens (20 % vs. 19 % respectively). Few subjects on either regimen did not achieve viral suppression through Week 48 (7 % on both regimens) and virologic failure was mainly due to viral rebound (13 % and 11 %, respectively). Discontinuation due to adverse events (AEs) and due to other reasons was slightly higher on EFV than on atazanavir (9 % vs. 6 % for discontinuation due to AEs, and 9 % vs. 7 % for discontinuation due to other reasons). Results for the proportion of patients in the REYATAZ arm compared to the efavirenz arm with HIV RNA < 50 copies/mL were 31 % vs. 36 %, respectively. The mean increase from baseline in CD4 cell count was 176 cells/mm³ for the REYATAZ arm and 160 cells/mm³ for the efavirenz arm.

Study AI424-008: REYATAZ 400 mg once daily compared to REYATAZ 600 mg once daily, and compared to nelfinavir 1250 mg twice daily, each in combination with stavudine and lamivudine twice daily

Table 25 Summary of patient demographics for clinical trial study AI424-008 in Antiretroviral Treatment-Naïve Adult Patients

Study #	Study design	Dosage, route of administration and duration	Study subjects (n)	Mean age (Range)	Sex
AI424-008	randomized, double-blind, multicenter	REYATAZ 400 mg once daily + lamivudine + stavudine	n = 181	35 years (18 to 69),	63 % male 37 % female
		nelfinavir 1250 mg twice daily + lamivudine + stavudine 48 Weeks	n = 91		

- ^a As a fixed-dose combination: 150 mg lamivudine, 300 mg zidovudine twice daily

Study AI424-008 was a 48-week, randomized, open-label, multicenter trial, blinded to dose of REYATAZ, comparing REYATAZ at two dose levels (400 mg and 600 mg once daily) (n=181 and n=195, respectively), to nelfinavir (1250 mg twice daily) (n=91), each in combination with stavudine (40 mg) and lamivudine (150 mg) given twice daily, in antiretroviral treatment-naïve patients. Patients had a mean age of 35 years (range: 18 to 69), 55 % were Caucasian, and 63 % were male. The mean baseline CD4 cell count was 295 cells/mm³ (range: 4 to 1003 cells/mm³) and the mean baseline plasma HIV-1 RNA level was 4.7 log₁₀ copies/mL (range: 1.8 to 5.9 log₁₀ copies/mL).

Study results

Table 26 Outcomes of Randomized Treatment Through Week 48 (Study AI424-008)

Outcome	REYATAZ 400 mg once daily + lamivudine + stavudine (n = 181)	nelfinavir 1250 mg twice daily + lamivudine + stavudine (n = 91)
Responder by TRWPF ^a	65 % (31 %)	59 % (38 %)
Virologic failure ^b	23 %	35 %
Rebound	11 %	14 %
Never suppressed through Week 48	12 %	21 %
Death or disease progression	2 %	-
Discontinued due to adverse event	4 %	3 %
Discontinued for other reasons ^c	4 %	2 %

^a TRWPF defined responders as patients who achieved and maintained confirmed HIV RNA < 400 copies/mL (< 50 copies/mL) through Week 48 without intervening replicated rebound, CDC Class C AIDS events, or treatment discontinuation. Roche Amplicor® HIV-1 Monitor™ Assay, test version 1.0 or 1.5 as geographically appropriate.

^b Includes confirmed viral rebound and failure to achieve confirmed HIV RNA < 400 copies/mL through Week 48.

^c Includes lost to follow-up, patient's withdrawal, noncompliance, protocol violation and other reasons.

Through 48 weeks of treatment, the proportion of patients with HIV RNA < 400 (< 50) copies/mL was 65 % (31 %) for the REYATAZ 400 mg arm and 59 % (38 %) for the nelfinavir arm. The mean increase from baseline in CD4 cell count was 234 cells/mm³ for the REYATAZ 400 mg arm and 211 cells/mm³ for the nelfinavir arm. Virologic failure was comparable across all study regimens and was due to approximately equal numbers of subjects who never achieved virologic suppression (12 % on ATV 400, 13 % on ATV 600 and 21 % on NFV).

Antiretroviral Treatment-Experienced Adult Patients

Study AI424-043: REYATAZ once daily compared to lopinavir + ritonavir twice daily, each in combination with two nucleosides

Table 27 Summary of patient demographics for clinical trial AI424-043 in Antiretroviral Treatment-Naive Adult Patients

Study #	Study design	Dosage, route of administration and duration	Study subjects (n)	Mean age (Range)	Sex
AI424-043	randomized, open-label, multicenter	REYATAZ 400 mg once daily to lopinavir + ritonavir + nelfinavir	n = 181	38 years (20 to 65)	79 % male 21 % female
		nelfinavir 1250 mg twice daily + lamivudine + stavudine	n = 91		
		48 Weeks			

Study AI424-043 is a, randomized, open-label, multicenter trial comparing REYATAZ (400 mg once daily) to lopinavir + ritonavir (400/100 mg twice daily), each in combination with two NRTIs, in 300 randomized subjects who experienced virologic failure to only one prior PI containing regimen. The mean time of prior exposure to antiretrovirals was 141 weeks for PIs, 181 weeks for NRTIs, and 93 weeks for NNRTIs (14 % of patients had prior exposure to NNRTIs). The mean age was 38 years (range: 20 to 65); 51 % were Hispanic, 42 % were Caucasian, and 79 % were male. The mean baseline CD4 cell count was 323 cells/mm³ (range: 54 to 1210 cells/mm³) and the mean baseline plasma HIV-1 RNA level was 4.14 log₁₀ copies/mL (range: 2.60 to 5.87 log₁₀ copies/mL). Based on results of the Week 24 analysis, patients in the REYATAZ treatment arm were offered alternative treatment after 24 weeks of study therapy.

The co-primary endpoints for this study were the time-averaged difference in change from baseline in HIV RNA levels through Week 48 (efficacy) and the Week 48 percentage change from baseline in fasting LDL cholesterol (safety). Through 48 weeks of therapy, 57 % of patients treated with REYATAZ has > 1 log₁₀ virologic suppression (or < 400 copies/mL) compared to 75% of patients treated with lopinavir/ritonavir. There was a greater proportion of patients with HIV RNA < 400 copies/mL and HIV RNA < 50 copies/mL in the lopinavir/ritonavir arm compared to the REYATAZ arm (67 % vs. 45 % and 51 % vs. 32 %).

Study Results

Based on the results of this study, REYATAZ without ritonavir is inferior to lopinavir/ritonavir in PI-experienced patients with prior virologic failure and is not recommended for such patients.

Study AI424-043 also compared changes from baseline in LDL-cholesterol. Through 48 weeks, REYATAZ resulted in significantly lower fasting LDL-cholesterol (co-primary endpoint), total cholesterol, and fasting triglyceride concentrations than lopinavir + ritonavir, as assessed by change from baseline. HDL cholesterol rose modestly and comparably between baseline to week 48 on both regimens (for more details, see [8 ADVERSE REACTIONS](#), **Table 12**).

Antiretroviral Treatment- Experienced Adult Patients (Salvage)

Study AI424-045: REYATAZ once daily + ritonavir once daily compared to REYATAZ once daily + saquinavir (soft gelatine capsules) once daily, and compared to lopinavir + ritonavir twice daily, each in combination with tenofovir DF + one NRTI

Table 28 Summary of patient demographics for clinical trials in Patients with Prior Antiretroviral Experience

Study #	Study design	Dosage, route of administration and duration	Study subjects (n)	Mean age (Range)	Sex
AI424-045	randomized, open-label, multicenter	REYATAZ 300 mg once daily + ritonavir 100 mg once daily + tenofovir DF + NRTI (281 weeks)	n = 120	41 years (24 to 74)	78 % male 22 % female
		lopinavir + ritonavir (400/100 mg) BID + tenofovir DF + NRTI (85 weeks)	n = 123		

Study AI424-045 is an ongoing, randomized, open-label, multicenter trial comparing REYATAZ (300 mg once daily) taken with ritonavir (100 mg once daily) and REYATAZ (400 mg once daily) in combination with saquinavir soft gelatine capsules (1200 mg once daily), to lopinavir + ritonavir (400/100 mg fixed dose combination twice daily), each in combination with tenofovir DF and one NRTI, in 358 randomized subjects with virologic failure on HAART regimens containing PIs, NRTIs, and NNRTIs. The mean time of prior antiretroviral exposure was 138 weeks for PIs, 281 weeks for NRTIs, and 85 weeks for NNRTIs. The mean age was 41 years (range: 24 to 74); 60 % were Caucasian and 78 % were male. The mean baseline CD4 cell count was 337 cells/mm³ (range: 14 to 1543 cells/mm³) and the mean baseline plasma HIV-1 RNA level was 4.40 log₁₀ copies/mL (range: 2.6 to 5.9 log₁₀ copies/mL). The primary endpoint for this study was the time-averaged difference in change from baseline in HIV RNA through 48 weeks.

Study Results

There are limited safety data from controlled clinical trials for REYATAZ plus ritonavir regimens without tenofovir DF.

The similarity (non-inferiority) of the antiviral efficacy of the ATV 300/RTV and LPV/RTV regimens was demonstrated for the primary efficacy endpoint through Week 48 (TAD [97.5 % CI] for ATV 300/RTV - LPV/RTV was 0.13 [- 0.12, 0.39]). In contrast, the antiviral efficacy of the ATV 400/SQV regimen was lower than that of the LPV/RTV regimen (TAD [97.5 % CI] ATV 400/SQV - LPV/RTV was 0.31 [0.07, 0.55] 0.33 [0.07, 0.60]). At Week 48, HIV RNA levels declined from baseline by a mean of 1.93 log₁₀ c/mL for ATV 300/RTV, and 1.87 log₁₀ c/mL for LPV/RTV.

The comparability of the ATV 300/RTV regimen relative to the LPV/RTV regimen was supported by the analyses which included the proportion of subjects with HIV RNA levels < 400 c/mL. Response rates at

Week 48 were comparable between the ATV 300/RTV and LPV/RTV treatment groups. Using the TRWPF definition, response rates were 53 % for ATV 300/RTV and 54 % for LPV/RTV.

Study AI424-045, however was not large enough to reach a definite conclusion that REYATAZ/ritonavir and lopinavir/ritonavir are equivalent on the secondary endpoint of proportions below the HIV RNA lower limit of detection.

Table 29 Outcomes of Treatment Through 48 Weeks in Study AI424-045 (Patients with Prior Antiretroviral Experience)*^a

Outcome	REYATAZ 300 mg once daily + ritonavir 100 mg once daily + tenofovir DF + NRTI N = 120	lopinavir + ritonavir (400/100 mg) BID + tenofovir DF + NRTI N = 123
HIV RNA Mean Change from Baseline (log ₁₀ copies/mL) ^{a,b,c}	-1.93	-1.87
CD4 Mean Change from Baseline (cell/mm ³) ^d	110	121
Percent of Randomized Patients Responding ^e		
HIV RNA <400 copies/mL ^a	53 %	54 %
HIV RNA <50 copies/mL ^a	36 %	42 %

* There are limited safety data from controlled trials for REYATAZ plus ritonavir regimens without tenofovir DF. (see [9 DRUG INTERACTIONS](#).)

^a Roche Amplicor® HIV-1 Monitor™ Assay, test version 1.5.

^b Based on patients with baseline and Week 48 HIV-1 RNA measurements (REYATAZ + ritonavir, n=90; lopinavir + ritonavir, n=99).

^c Protocol-defined primary efficacy outcome measure.

^d Based on patients with baseline and Week 48 CD4 cell count measurements (REYATAZ + ritonavir, n=83; lopinavir + ritonavir, n=94).

^e TRWPF defined as responders patients who achieved and maintained confirmed HIV RNA < 400 copies/mL (< 50 copies/mL) through week 48 without intervening replicated rebound, CDC Class C AIDS events, or treatment discontinuation.

Pediatric Patients

Table 30 Summary of patient demographics for clinical trials in Pediatric Patients

Study #	Study design	Dosage, route of administration and duration	Study subjects (n)	Mean age (Range)	Sex
PACTG 1020A	open-label, multicenter	REYATAZ once daily + ritonavir + two NRTIs (281 weeks)	182 patients (83 antiretroviral-naïve and 99 antiretroviral-experienced)	3 months to 21 years	50 % male 50 % female

Assessment of the pharmacokinetics, safety, tolerability, and efficacy of REYATAZ is based on data from the open-label, multicenter clinical trial PACTG 1020A conducted in patients from 3 months to 21 years of age. In this study, 182 patients (83 antiretroviral-naïve and 99 antiretroviral-experienced) received once daily REYATAZ, with or without ritonavir, in combination with two NRTIs.

Study Results

Ninety-nine patients (6 to less than 18 years of age) treated with the REYATAZ capsule formulation, with or without ritonavir, were evaluated. In this cohort, the overall proportions of antiretroviral-naïve and -experienced patients with HIV RNA < 400 copies/mL at week 24 were 68 % (28/41) and 33 % (19/58), respectively. The overall proportions of antiretroviral-naïve and -experienced patients with HIV RNA < 50 copies/mL at week 24 were 59 % (24/41) and 24 % (14/58), respectively. The median increase from baseline in absolute CD4 count at 20 weeks of therapy was 171 cells/mm³ in antiretroviral-naïve patients and 116 cells/mm³ in antiretroviral-experienced patients. The efficacy of REYATAZ in the pediatric population beyond 24 weeks has not yet been established.

Pregnant Women

Table 31 Summary of patient demographics for clinical trials in Pregnant Woman

Study #	Study design	Dosage, route of administration and duration	Study subjects (n)	Mean age (Range)	Sex
AI424-182	open label non-randomized	REYATAZ/ritonavir (300/100 mg or 400/100 mg) + zidovudine/lamivudine	41 women	3 months to 21 years	100 % female

In clinical trial AI424-182 REYATAZ/ritonavir (300/100 mg or 400/100 mg) in combination with zidovudine/lamivudine was administered to 41 pregnant women during the second or third trimester.

Study Results

Among the 39 women who completed the study, 38 women achieved an HIV RNA < 50 copies/mL at time

of delivery. Six of 20 (30 %) women on REYATAZ/ritonavir 300/100 mg and 13 of 21 (62 %) women on REYATAZ/ritonavir 400/100 mg experienced grades 3 to 4 hyperbilirubinemia.

Forty infants had test results that were negative for HIV-1 DNA at the time of delivery and/or during the first 6 months postpartum. All 40 infants received antiretroviral prophylactic treatment containing zidovudine. Three of 20 infants (15 %) born to women treated with REYATAZ/ritonavir 300/100 mg and four of 20 infants (20 %) born to women treated with REYATAZ/ritonavir 400/100 mg experienced grade 3-4 bilirubin. There was no evidence of pathologic jaundice and six of 40 infants in this study received phototherapy for a maximum of 4 days.

See [4 DOSAGE AND ADMINISTRATION](#), Dosage Adjustments, Pregnant Women

15 MICROBIOLOGY

Antiviral activity *in vitro*

Atazanavir exhibits anti-HIV-1 activity with a mean 50 % effective concentration (EC₅₀) in the absence of human serum of 2 to 5 nM against a variety of laboratory and clinical HIV-1 isolates grown in peripheral blood mononuclear cells, macrophages, CEM-SS cells, and MT-2 cells. ATV has activity against HIV-1 Group M subtype viruses A, B, C, D, AE, AG, F, G, and J isolates in cell culture. ATV has variable activity against HIV-2 isolates (1.9 to 32 nM), with EC₅₀ values above the EC₅₀ values of failure isolates. Two-drug combination studies with ATV showed additive to antagonistic antiviral activity *in vitro* with abacavir and the NNRTIs (delavirdine, efavirenz, and nevirapine) and additive antiviral activity *in vitro* with the PIs (amprenavir, lopinavir, nelfinavir, ritonavir, and saquinavir), NRTIs (didanosine, emtricitabine, lamivudine, stavudine, tenofovir DF, zalcitabine, and zidovudine), the HIV-1 fusion inhibitor enfuvirtide, and two compounds used in the treatment of viral hepatitis, adefovir and ribavirin, without enhanced cytotoxicity.

Resistance

Clinical Studies of Treatment-Naive Patients: Receiving REYATAZ 400 mg Without Ritonavir: ATV-resistant clinical isolates from treatment-naive patients who experienced virologic failure developed an I50L mutation (after an average of 50 weeks of ATV therapy), often in combination with an A71V mutation. In treatment-naive patients, viral isolates that developed the I50L mutation showed phenotypic resistance to ATV but retained *in vitro* susceptibility to other PIs (amprenavir, lopinavir, nelfinavir, ritonavir, and saquinavir); however, there are no clinical data available to demonstrate the effect of the I50L mutation on the efficacy of subsequently administered PIs.

Clinical Studies of Treatment-Naive Patients Receiving REYATAZ 300 mg With Ritonavir 10 mg: In Phase III study AI424-138, an as-treated genotypic and phenotypic analysis was conducted on samples from patients who experienced virologic failure ≥ 400 copies/mL or discontinued before achieving suppression on ATV/RTV (n=39; 9 %) and LPV/RTV (n=39; 9 %) through 96 weeks of treatment. In the ATV/RTV arm, one virologic failure isolate had a 56-fold decrease in ATV susceptibility emerge on therapy with the development of PI substitutions L10F, V32I, K43T, M46I, A71I, G73S, I85I/V, and L90M. Five of the treatment failure isolates in the ATV/RTV arm developed emtricitabine resistance with the emergence of either the M184I (1 patient) or the M184V (4 patients) substitution on therapy. In the LPV/RTV arm, one virologic failure isolate had a 69-fold decrease in LPV susceptibility emerge on therapy with the

development of PI substitutions L10V and V11I in addition to baseline PI substitutions V32I, I54I/V, V82A, L90M, L10I, A71I, G73S and L89V. Six of the failure isolates in the LPV/RTV arm developed emtricitabine resistance with the emergence of the M184V substitution.

Clinical Studies of Treatment-Experienced Patients: In contrast, from studies of treatment-experienced patients treated with ATV or ATV/RTV, most ATV-resistant isolates from patients who experienced virologic failure developed mutations that were associated with resistance to multiple PIs and displayed decreased susceptibility to multiple PIs. The most common protease mutations to develop in the viral isolates of patients who failed treatment with ATV 300 mg once daily and RTV 100 mg once daily (together with tenofovir DF and an NRTI) included V32I, L33F/V/I, E35D/G, M46I/L, I50L, F53L/V, I54V, A71V/T/I, G73S/T/C, V82A/T/L, I85V, and L89V/Q/M/T. Other mutations that developed on ATV/RTV treatment including E34K/A/Q, G48V, I84V, N88S/D/T, and L90M occurred in less than 10 % of patient isolates. Generally, if multiple PI resistance mutations were present in the HIV-1 of the patient at baseline, ATV resistance developed through mutations associated with resistance to other PIs and could include the development of the I50L mutation. The I50L mutation has been detected in treatment-experienced patients experiencing virologic failure after long-term treatment. Protease cleavage site changes also emerged on ATV treatment, but their presence did not correlate with the level of ATV resistance.

Clinical Studies of Treatment-Naive Patients: Comparison of Ritonavir-Boosted REYATAZ vs. Unboosted REYATAZ: Study AI424-089 compared REYATAZ 300 mg once daily with ritonavir 100 mg vs. REYATAZ 400 mg once daily when administered with lamivudine and extended release stavudine in HIV-infected treatment-naive patients. A summary of the number of virologic failures and virologic failure isolates with ATV resistance in each arm is shown in Table 32.

Table 32 Summary of Virologic Failures^a at Week 96 in Study AI424-089: Comparison of Ritonavir Boosted REYATAZ vs. Unboosted REYATAZ: Randomized Patients

	REYATAZ 300 mg + ritonavir 100 mg (n=95)	REYATAZ 400 mg (n=105)
Virologic Failure (≥50 copies/mL) at Week 96	15 (16 %)	34 (32 %)
Virologic Failure with Genotypes and Phenotypes Data	5	17
Virologic Failure Isolates with ATV-resistance at Week 96	0/5 (0 %) ^b	4/17 (24 %) ^b
Virologic Failure Isolates with I50L Emergence at Week 96 ^c	0/5 (0 %) ^b	2/17 (12 %) ^b
Virologic Failure Isolates with Lamivudine Resistance at Week 96	2/5 (40 %) ^b	11/17 (65 %) ^b

^a Virologic failure includes patients who were never suppressed through Week 96 and on study at Week 96, had virologic rebound or discontinued due to insufficient viral load response.

^b Percentage of Virologic Failure Isolates with genotypic and phenotypic data.

^c Mixture of I50I/L emerged in 2 other ATV 400 mg-treated patients. Neither isolate was phenotypically resistant to ATV.

Cross-Resistance

An association between virologic response at 48 weeks and the number and type of primary PI-resistance-associated mutations detected in baseline HIV-1 isolates from antiretroviral-experienced patients receiving ATV/RTV once daily or lopinavir (LPV)/RTV twice daily in Study AI424-045 is shown in Table 33.

Overall, both the number and type of baseline PI mutations affected response rates in treatment-experienced patients. In the ATV/RTV group, patients had lower response rates when 3 or more baseline PI mutations including a mutation at position 36, 71, 77, 82, or 90 were present compared to patients with 1-2 PI mutations including one of these mutations.

Table 33: HIV RNA Response by Number and Type of Baseline PI Mutation, Antiretroviral-Experienced Patients in Study AI424-045, As-Treated Analysis

Number and Type of Baseline PI Mutations ^a	Virologic Response = HIV RNA < 400 copies/mL ^b	
	ATV/RTV (n=110)	LPV/RTV (n=113)
3 or more primary PI mutations including:^c		
D30N	75 % (6/8)	50 % (3/6)
M36I/V	19 % (3/16)	33 % (6/18)
M46I/L/T	24 % (4/17)	23 % (5/22)
I54V/L/T/M/A	31 % (5/16)	31 % (5/16)
A71V/T/I/G	34 % (10/29)	39 % (12/31)
G73S/A/C/T	14 % (1/7)	38 % (3/8)
V77I	47 % (7/15)	44 % (7/16)
V82A/F/T/S/I	29 % (6/21)	27 % (7/26)
I84V/A	11 % (1/9)	33 % (2/6)
N88D	63 % (5/8)	67 % (4/6)
L90M	10 % (2/21)	44 % (11/25)
Number of baseline primary PI mutations^a		
All patients, as treated	58 % (64/110)	59 % (67/113)
0–2 PI mutations	75 % (50/67)	75 % (50/67)
3–4 PI mutations	41 % (14/34)	43 % (12/28)
5 or more PI mutations	0 % (0/9)	28 % (5/18)

^a Primary mutations include any change at D30, V32, M36, M46, I47, G48, I50, I54, A71, G73, V77, V82, I84, N88, and L90.

^b Results should be interpreted with caution because the subgroups were small.

^c There were insufficient data (n<3) for PI mutations V32I, I47V, G48V, I50V, and F53L.

The response rates of antiretroviral-experienced patients in Study AI424-045 were analyzed by baseline phenotype (shift in in vitro susceptibility relative to reference, Table 34). The analyses are based on a

select patient population with 62 % of patients receiving an NNRTI-based regimen before study entry compared to 35 % receiving a PI-based regimen. Additional data are needed to determine clinically relevant break points for REYATAZ.

Table 34: Baseline Phenotype by Outcome, Antiretroviral-Experienced Patients in Study AI424-045, As-Treated Analysis

Baseline Phenotype ^a	Virologic Response = HIV RNA < 400 copies/mL ^b	
	ATV/RTV (n=111)	LPV/RTV (n=111)
0–2	71 % (55/78)	70 % (56/80)
> 2–5	53 % (8/15)	44 % (4/9)
> 5–10	13 % (1/8)	33 % (3/9)
> 10	10 % (1/10)	23 % (3/13)

^a Fold change in *in vitro* susceptibility relative to the wild-type reference.

^b Results should be interpreted with caution because the subgroups were small.

16 NON-CLINICAL TOXICOLOGY

General Toxicology:

Acute Toxicity

The single-dose oral toxicity of atazanavir was evaluated in mice and rats at doses of 200 to 1600 mg/kg. In mice, doses of 800 and 1600 mg/kg produced death; clinical signs including tremors, hypoactivity, ptosis, scant stool, and/or urogenital staining; and transient group mean body weight loss (males). Additional clinical signs observed at 1600 mg/kg included loss of righting reflex, recumbency, and labored respiration. Clinical signs were generally first noted on Day 2 and resolved within 2 to 3 days. Doses up to 400 mg/kg were well tolerated in mice with only transient scant stool observed at 400 mg/kg. The no-effect dose in mice was 200 mg/kg. In rats, no atazanavir-related effects were observed after administration of single oral doses up to 1600 mg/kg.

Short- and Long-Term Toxicity

Repeat-dose oral toxicity studies were conducted in rats for 2 weeks to 6 months, and in dogs for 2 weeks to 9 months to evaluate the short- and long-term toxicity of atazanavir. Atazanavir-related findings were generally confined to the liver and included increases in serum total bilirubin in both species and liver enzymes in dogs, and hepatocellular vacuolation and hypertrophy in rats. These liver changes were observed at systemic exposures (AUC) of atazanavir that were 0.4 to 4 times in rats and 0.2 to 20 times in dogs the exposure in humans given atazanavir at 400 mg once daily. Similar liver changes were also observed in a 3-month oral toxicity study in mice at exposures 0.4 to 12 times the exposure in humans given 400 mg once daily. Additionally in mice, cytotoxic liver changes were observed in males (increased

transaminases) and females (increased transaminases and single-cell necrosis) at exposures equivalent to and 12 times, respectively, that observed in humans given 400 mg once daily, whereas no effects were observed at exposures of 0.4 and 4 times, respectively, human exposure. Serum cholesterol and glucose were minimally to mildly increased in rats but not in mice. Similar increases were observed in an initial 2-week oral toxicity study performed in dogs. Subsequent 2-week and 9-month oral toxicity studies in dogs showed no drug-related changes in serum cholesterol and glucose.

Carcinogenicity

Carcinogenicity studies with atazanavir were conducted in mice and rats. Mice were administered doses of 20, 40, and 80 mg/kg/day in males and 40, 120, and 360 mg/kg/day in females. In female mice, there was an increase in the incidence of benign hepatocellular adenomas at the highest dose. The exposure in female mice at the high dose is approximately seven times exposure in humans given atazanavir 400 mg once daily. No increase in the incidence of tumors was observed in female mice at lower doses or male mice at any dose. Exposures in male and female mice at nontumorigenic doses are approximately four times human exposure at 400 mg/day. In rats administered doses of 100, 350, and 1200 mg/kg/day, there was no increased incidence of any tumor type. Exposures in rats at the high dose are approximately two (males) and six (females) times exposure in humans given atazanavir 400 mg once daily. The clinical significance of benign hepatocellular adenomas in high-dose female mice is unknown as these benign tumors occurred in mice only at exposures (approximately seven times human exposure at 400 mg/day) causing significant liver damage.

Genotoxicity

Atazanavir tested positive in an in vitro clastogenicity test using primary human lymphocytes, in the absence and presence of metabolic activation. Atazanavir tested negative in the in vitro Ames reverse-mutation assay, in vivo micronucleus and DNA repair tests in rats, and in vivo DNA damage test in rat duodenum (Comet assay).

Reproductive and Developmental Toxicology: In a fertility and early embryonic development study in rats, atazanavir altered oestrus cycling with no effects on mating or fertility. No teratogenic effects were observed in rats or rabbits at maternally toxic doses. In the pre- and postnatal development assessment in rats, atazanavir produced a transient reduction in body weight in the offspring at a maternally toxic dose. Systemic exposure to atazanavir at doses that resulted in maternal toxicity was at least equal to or slightly greater than that observed in humans given 400 mg once daily.

Special Toxicology:

Cardiotoxicity: Atazanavir minimally increased the duration of the rabbit Purkinje fiber action potential, weakly inhibited sodium and potassium IKr (HERG-encoded) and IKs currents ($IC_{50} > 30 \mu M$), and moderately inhibited calcium current ($IC_{50} = 10.4 \mu M$) in vitro. Electrocardiographic changes (sinus bradycardia, prolongation of PR interval, prolongation of QT interval, and prolongation of QRS complex) were observed only in an initial 2-week oral toxicity study performed in dogs and were considered secondary to the marked clinical toxicity and not a direct drug effect. Subsequent 2-week and 9-month oral toxicity studies in dogs showed no drug-related electrocardiographic changes.

Juvenile Toxicity: In a fertility and early embryonic development study in rats, atazanavir altered oestrus cycling with no effects on mating or fertility. No teratogenic effects were observed in rats or rabbits at maternally toxic doses. In the pre- and postnatal development assessment in rats, atazanavir produced

a transient reduction in body weight in the offspring at a maternally toxic dose. Systemic exposure to atazanavir at doses that resulted in maternal toxicity was at least equal to or slightly greater than that observed in humans given 400 mg once daily.

PATIENT MEDICATION INFORMATION

READ THIS FOR SAFE AND EFFECTIVE USE OF YOUR MEDICINE

Pr[®]REYATAZ[®]

atazanavir capsules

Read this carefully before you start taking **REYATAZ** and each time you get a refill. This leaflet is a summary and will not tell you everything about this drug. Talk to your healthcare professional about your medical condition and treatment and ask if there is any new information about **REYATAZ**.

What is REYATAZ used for?

REYATAZ is used in combination with other antiviral drugs to treat human immunodeficiency virus (HIV) infection in adults and pediatric patients 6 years of age and older and weighing at least 20 kg. HIV is the virus that causes Acquired Immune Deficiency Syndrome (AIDS).

How does REYATAZ work?

HIV destroys CD4+ (T) cells. These cells are important to help the immune system fight infection. After a large number of T cells are destroyed, AIDS develops. REYATAZ belongs to a family of medicines called protease inhibitors. These help control HIV infection by blocking HIV protease, an enzyme that HIV needs to multiply. This lowers the amount of HIV in your blood (called “viral load”) and allows the number of T cells in your body to increase.

REYATAZ does not cure HIV infection or AIDS. You may continue to develop infections or other conditions associated with HIV infection. Because of this, it is very important for you to remain under the care of a healthcare professional while taking REYATAZ.

What are the ingredients in REYATAZ?

Medicinal ingredient: atazanavir sulfate.

Non-medicinal ingredients: black iron oxide (300 mg), crospovidone, FD&C Blue #2, gelatine, lactose monohydrate, magnesium stearate, red iron oxide (300 mg), titanium dioxide, and yellow iron oxide (300 mg).

REYATAZ comes in the following dosage forms:

Capsules: 200 mg and 300 mg of atazanavir (as atazanavir sulfate).

Do not use REYATAZ if:

- you are taking any medication listed in this leaflet in the **Serious Drug Interactions** box below.
- you are allergic to atazanavir sulfate or any of the other ingredients in REYATAZ.
- you have or have had severe liver disease.

To help avoid side effects and ensure proper use, talk to your healthcare professional before you take REYATAZ. Talk about any health conditions or problems you may have, including if you:

- have liver problems, including Hepatitis B or C infection because the dose of REYATAZ may need to be reduced.
- have kidney problems.
- have or have had heart problems including a slow heartbeat or a genetic condition called “long congenital QT syndrome”.
- have problems with your electrolytes (low levels of potassium, magnesium or calcium in your

- blood) or suffer from excessive vomiting or diarrhea.
- have hemophilia Type A or B.
- have lactic acidosis (high levels of acid in the blood). See the **Serious side effects and what to do about them** table below for symptoms. Talk to your healthcare professional right away if you get these symptoms.
- are taking quetiapine (SEROQUEL*, SEROQUEL* XR), a medicine used to treat mental health problems such as schizophrenia. Serious side effects that could result in death have happened in patients taking quetiapine together with HIV protease inhibitors.
- are lactose intolerant or have one of the following rare hereditary diseases:
 - Galactose intolerance,
 - Lapp lactase deficiency, or
 - Glucose-galactose malabsorption,
 because lactose is a non-medicinal ingredient in REYATAZ.

Other warnings you should know about:

REYATAZ can cause serious side effects:

- **Gallbladder problems:** Gallstones and gallbladder inflammation have been reported.
- **Heart problems:** REYATAZ can cause changes in the way your heart beats (heart rhythm changes).
- **Immune reconstitution inflammatory syndrome:** Changes to your immune system can happen when you start taking HIV medicines. Your immune system may get stronger and begin to fight infections that have been hidden in your body for a long time. Autoimmune disorders can also happen. This is when the immune system attacks healthy body tissue. Examples of this include Grave's disease (which affects the thyroid gland), Guillain-Barré syndrome (which affects the nervous system) or polymyositis (which affects the muscles). Autoimmune disorders may occur many months after the start of treatment.
- **Kidney stones:** There have been reports of kidney stones.
- **Serious skin reactions:** Serious skin reactions including Stevens-Johnson syndrome (SJS), erythema multiforme and drug reaction with eosinophilia and systemic symptoms (DRESS) have been reported in patients receiving REYATAZ.

See the **Serious side effects and what to do about them** table below for more information on these and other serious side effects.

Diabetes and high blood sugar: There have been reports of increased blood sugar and development or worsening of diabetes in patients using protease inhibitors like REYATAZ. Tell your healthcare professional if you have diabetes or a history of high blood sugar. If you take insulin or oral medicines to control your blood sugar your dose might need to be changed.

Fat redistribution: Changes in body fat have been seen in some patients taking antiretroviral medicine. These changes may include increased amount of fat in the upper back and neck (buffalo hump), the breasts and around the trunk. Loss of fat from the legs, arms and face may also happen.

Pregnancy and breastfeeding:

- Tell your healthcare professional if you are pregnant, think you might be pregnant or are planning

to become pregnant. It is not known if REYATAZ can harm your unborn baby.

- Pregnant women have experienced serious side effects when taking REYATAZ with other HIV medicines called nucleoside analogues.
- If you get pregnant while taking REYATAZ you and your healthcare professional will need to decide if REYATAZ is right for you.
- There is a registry for women who take antiretroviral medicines during pregnancy called the Antiretroviral Pregnancy Registry. The purpose of this registry is to collect information about the health of you and your baby. If you take REYATAZ while you are pregnant, talk to your healthcare professional about taking part in the registry.
- REYATAZ passes into breast milk. You should not take REYATAZ if you are breastfeeding. This is also to avoid transmission of HIV to your infant through breast milk. Talk to your healthcare professional about how to feed your baby.

Infecting others with HIV: REYATAZ will not stop you from passing HIV to others, although this risk is lower if you take your HIV medicine as instructed by your healthcare professional. You should take steps to avoid this by:

- Using condoms when you have oral or penetrative sex.
- Not reusing or sharing needles, syringes, or other injection equipment.

Blood tests and monitoring: REYATAZ can cause abnormal blood test results. Your healthcare professional will decide when to perform blood tests and will interpret the results.

Tell your healthcare professional about all the medicines you take, including any drugs, vitamins, minerals, natural supplements or alternative medicines.

Serious Drug Interactions

Do NOT take any of the following drugs with REYATAZ:

- medicines to treat HIV infection such as nevirapine (VIRAMUNE*).
- medicines used to thin the blood and prevent blood clots such as apixaban (ELIQUIS®) and rivaroxaban (XARELTO*).
- medicines used to treat schizophrenia and bipolar depression such as lurasidone (LATUDA*).
- medicines used to prevent seizures such as carbamazepine (TEGRETOL*), phenytoin (DILANTIN*), and phenobarbital.
- medicines used to treat certain types of cancer such as apalutamide (ERLEADA*), irinotecan (CAMPTOSAR*), encorafenib (BRAFTOVI*), neratinib (NERLYNX*), and venetoclax (VENCLEXTA*).
- medicines used to treat gout such as colchicine (MYFLINA*).
- medicines used to treat migraines such as dihydroergotamine, ergonovine, ergotamine, methylergonovine, and ergot alkaloid.
- medicines used to treat high cholesterol such as lomitapide (JUXTAPID*), lovastatin (MEVACOR*), and simvastatin (ZOCOR*).
- medicines used to treat the liver disease Hepatitis C such as glecaprevir/pibrentasvir (MAVIRET*).
- alfuzosin (XATRAL*), a medicine used to treat benign prostate gland enlargement.
- medicines used to treat irregular heartbeats such as amiodarone (CORDARONE*), dronedarone (MULTAQ*), flecainide (TAMBOCOR*), propafenone (RYTHMOL*), and quinidine (BIQUIN*).
- medicines used to treat chronic angina (chest pain) such as ranolazine (CORZYNA*).
- medicines used to treat motor and verbal tics caused by Tourette's disorder such as pimozide (ORAP*).
- medicines used to reduce the risk of cardiovascular events, ticagrelor (BRILINTA*).
- medicines used to treat bacterial infections (e.g., tuberculosis) such as rifampin (RIFADIN*, RIFATER*, or ROFACT*).
- medicines used for asthma and chronic obstructive pulmonary disease (COPD) such as salmeterol (SEREVENT*).
- sildenafil (REVATIO*), a medicine used to treat the lung disease pulmonary arterial hypertension (PAH).
- St. John's wort (*Hypericum perforatum*), a herbal product used to treat depression.
- medicines used to treat insomnia such as triazolam (HALCION*).
- vardenafil, a medicine used for erectile dysfunction.

The following may also interact with REYATAZ:

- antipsychotics, medicines used to treat mental health problems (e.g., schizophrenia and bipolar disorder) such as quetiapine (SEROQUEL* or SEROQUEL* XR), and lurasidone (LATUDA*) when used without ritonavir.
- endothelin receptor antagonists, medicines used to treat pulmonary arterial hypertension (high

blood pressure in the lungs) such as bosentan (TRACLEER*) when taken with REYATAZ without ritonavir.

- proton pump inhibitors, medicines used for indigestion and heart burn or ulcers such as omeprazole (LOSEC*).
- Hepatitis C direct-acting antivirals, medicines used to treat Hepatitis C infections such as sofosbuvir/velpatasvir/voxilaprevir (VOSEVI*).
- inhaled beta agonists, medicines used to treat breathing problems like asthma and COPD such as salmeterol (SEREVENT DISKUS*), and salmeterol with fluticasone (ADVIR*).
- phosphodiesterase type 5 (PDE5) inhibitors for erectile dysfunction such as sildenafil (VIAGRA*), and tadalafil (CIALIS*).
- phosphodiesterase type 5 (PDE5) inhibitors for pulmonary arterial hypertension (high blood pressure in the lungs) such as tadalafil (ADCIRCA*).
- antiplatelets, medicines used to prevent blood clots such as clopidogrel (PLAVIX*).
- other antivirals, medicines used to treat HIV and AIDS such as didanosine (VIDEX®) buffered formulations or didanosine EC formulation. **REYATAZ must be taken with a meal either 1 hour before or 2 hours after taking these types of drugs;** tenofovir disoproxil fumarate (VIREAD*), efavirenz, saquinavir (soft gelatine capsules), ritonavir (NORVIR*), and other protease inhibitors.
- antacids, medicines used to treat heartburn and stomach upset; **REYATAZ must be taken with a meal either 1 hour before or 2 hours after taking these types of drugs.**
- antiarrhythmics, medicines used to treat irregular heartbeat such as lidocaine (when given by injection).
- anticoagulants, medicines used to thin the blood and prevent blood clots such as warfarin (COUMADIN®), dabigatran (PRADAXA*), and edoxaban (LIXIANA*).
- antidepressants, medicines used to treat depression such as tricyclic antidepressants, amitriptyline (ELAVIL*), imipramine (TOFRANIL*), and trazodone (OLEPTRO*).
- anticonvulsants, medicines used to prevent seizures such as lamotrigine (LAMICTAL*).
- antifungals, medicines used to treat fungal infections such as ketoconazole (NIZORAL*), itraconazole (SPORANOX*), and voriconazole (VFEND*).
- antimycobacterials, medicines used to treat infections like tuberculosis (TB) such as rifabutin (MYCOBUTIN*).
- benzodiazepines, medicines often used to treat anxiety such as midazolam when injected.
- gonadotropin-releasing hormone antagonist receptor (GnRH) antagonists, medicines used to suppress sex hormone production such as elagolix (ORILISSA*).
- calcium channel blockers, medicines used to lower blood pressure such as diltiazem (CARDIZEM* or TIAZAC*), desacetyl diltiazem, felodipine (PLENDIL*), nifedipine (ADALAT*), nicardipine (CARDENE*), and verapamil (SOPTIN* or VERELAN*).
- kinase inhibitors, medicines used to treat low blood platelets such as fostamatinib (TAVALISSE*).
- hydroxymethylglutaryl-CoA (HMG-CoA) reductase inhibitors, medicines used to lower cholesterol such as atorvastatin (LIPITOR*), and rosuvastatin (CRESTOR*).
- immunosuppressants, medicines used in organ transplants such as cyclosporin (SANDIMMUNE* or NEORAL*), tacrolimus (PROGRAF*), and sirolimus (RAPAMUNE*).
- corticosteroids, medicines used to treat inflammation such as dexamethasone, and fluticasone propionate (FLONASE* or FLOVENT*).
- antibiotics, medicines used to treat bacterial infections such as clarithromycin (BIAXIN*).
- oral contraceptives, medicines used for birth control such as ethinyl estradiol, norgestimate, and norethindrone.

- stomach acid reducing agents such as famotidine (PEPCID AC*).

How to take REYATAZ:

- Take REYATAZ exactly as your healthcare professional has told you. Do not change your dose or stop taking REYATAZ without talking to your healthcare professional.
- REYATAZ should always be taken with other antiretrovirals used to treat HIV infection.
- REYATAZ should be taken with food at about the same time each day.
- REYATAZ capsules should not be opened, they should be swallowed whole with water.

Usual dose:

For adults, who have never taken HIV medicines before:

- 300 mg once daily taken with ritonavir 100 mg once daily;
OR
- 400 mg (two 200 mg capsules) once daily (without ritonavir).

For adults who have taken HIV medicines before:

- 300 mg once daily taken with ritonavir 100 mg once daily.

For children from 6 to 18 years of age, weighing at least 20 kg:

- Your child's healthcare professional will decide on the dose that is best for them depending on their weight.

Overdose:

If you think you, or a person you are caring for, have taken too much REYATAZ, contact a healthcare professional, hospital emergency department, or regional poison control centre immediately, even if there are no symptoms.

Missed Dose:

If you forget to take a dose, take the dose you missed as soon as possible with some food, and then return to your normal schedule. However, if a dose is skipped, do not double the next dose. Continue as normal with your next dose.

What are possible side effects from using REYATAZ?

These are not all the possible side effects you may have when taking REYATAZ. If you experience any side effects not listed here, tell your healthcare professional.

Side effects may include:

- nausea,
- vomiting,
- diarrhea,
- abdominal pain,
- indigestion,
- headache,
- dizziness,
- insomnia,
- fever,

- muscle pain.

Serious side effects and what to do about them			
Symptom / effect	Talk to your healthcare professional		Stop taking drug and get immediate medical help
	Only if severe	In all cases	
COMMON			
Liver problems: high liver blood test results, nausea, vomiting, loss of appetite, swelling, pain, aching or tenderness on the right side below the ribs, yellowing of the skin or eyes (jaundice), dark urine, pale stool, unusual tiredness		√	
Rash: redness, itching	√		
UNCOMMON			
Lactic acidosis (too much lactic acid in the blood): weight loss, fatigue, malaise, loss of appetite, unusual muscle pain, feeling dizzy or lightheaded, fast or irregular heartbeat, shortness of breath, feeling unusually cold, especially in arms and legs, severe hepatomegaly (swollen and enlarged liver) with symptoms of liver problems such as nausea, vomiting, stomach pain, weakness, diarrhea		√	
RARE			
Allergic reaction: difficulty swallowing or breathing, wheezing, drop in blood pressure, feeling sick to your stomach and throwing up, hives or rash, swelling of the face, lips, tongue or throat			√
Angioedema (swelling of tissue under the skin): difficulty breathing, swelling of face, tongue, throat, hands and feet, genitals and digestive tract causing diarrhea, nausea and vomiting			√
Diabetes and high blood sugar: excessive thirst, urination and hunger, unexplained weight loss, poor wound healing, infections		√	

Gallbladder problems (gallstones and inflammation): fever, nausea, pain that radiates to your shoulder or back, severe pain in your upper right abdomen, vomiting, yellowing of the skin or eyes (jaundice), pale stool, dark urine		√	
Heart problems: irregular heartbeat, dizziness, light-headedness, shortness of breath		√	
Immune reconstitution inflammatory syndrome and autoimmune disorders: fever, redness, rash or swelling, fatigue, joint or muscle pain, numbness or weakness beginning in the hands and feet and moving up towards the trunk of the body, palpitations, chest pain or rapid heart rate, yellowing of the eyes and skin, anxiety and irritability accompanied by tremor of your hands or fingers, muscle weakness in your hips, thighs, shoulders, upper arms and neck		√	
Kidney stones: pain in your side, blood in your urine, pain when you urinate			√
Severe skin reactions (erythema multiforme, SJS, DRESS): severe rash, itching, fever, swollen lymph glands, flu-like feeling, blisters and peeling of skin that may start in and around the mouth, nose, eyes and genitals and spread to other areas of the body, yellow skin or eyes, shortness of breath, dry cough, chest pain or discomfort, feeling thirsty, urinating less often, less urine			√

If you have a troublesome symptom or side effect that is not listed here or becomes bad enough to interfere with your daily activities, tell your healthcare professional.

Reporting Side Effects

You can report any suspected side effects associated with the use of health products to Health Canada by:

- Visiting the Web page on Adverse Reaction Reporting (<https://www.canada.ca/en/health-canada/services/drugs-health-products/medeffect-canada/adverse-reaction-reporting.html>) for information on how to report online, by mail or by fax; or
- Calling toll-free at 1-866-234-2345.

NOTE: Contact your healthcare professional if you need information about how to manage your side effects. The Canada Vigilance Program does not provide medical advice.

Storage:

Store the REYATAZ capsules between 15°C and 30°C. Protect from moisture. Keep out of reach and sight of children.

If you want more information about REYATAZ:

- Talk to your healthcare professional.
- Find the full Product Monograph that is prepared for healthcare professionals and includes this Patient Medication Information by visiting the Health Canada website (<https://www.canada.ca/en/health-canada/services/drugs-health-products/drug-products/drug-product-database.html>); the manufacturer's website (<https://bms.com/ca/en>), or by calling 1-866-463-6267.

This leaflet was prepared by Bristol-Myers Squibb Canada (Montreal, Canada, H4S 0A4).

Last Revised: OCT 23, 2024.

REYATAZ is a registered trademark of Bristol-Myers Squibb Holdings Ireland Unlimited Company used under licence by Bristol-Myers Squibb Canada.

ELIQUIS® is a registered trademark of Bristol-Myers Squibb Holdings Ireland Unlimited Company used under licence by Bristol-Myers Squibb Canada

*Brands listed are trademarks of their respective owners.