

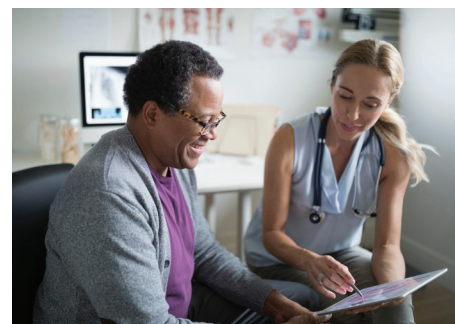
# Delivering progress on a cellular level



A pioneer in harnessing the immune system to fight cancer, the **Bristol Myers Squibb Cell Therapy Organization** is working to **unlock the full potential of cell therapy and deliver transformative treatments to patients with cancer and beyond.**



The building blocks of transformation—cutting-edge technologies, extensive clinical datasets, a deep bench of talent with experience across distinct targets and diseases, robust manufacturing capabilities and a focus on continuous improvement—are **in our cells.**



## OUR VISION FOR THE FUTURE:

Hundreds of thousands of patients globally can be treated by the transformative potential of cell therapy.

# Delivering progress on a cellular level

## Transformation on a cellular level

- Our **anti-BCMA CAR T cell therapy** is available for patients with triple-class exposed relapsed or refractory multiple myeloma, including in earlier lines of therapy.
- Our **CD19-directed CAR T cell therapy** is an important option for patients with certain relapsed/refractory B cell-mediated lymphomas.
- These two products make us the **only company with two approved CAR T cell therapies with two distinct targets**. With approvals across North America, Europe and Asia, we are working with global regulatory bodies to continue to expand across lines of therapy and indications.

## Impact on a cellular level

- To date, **more than 15,000 patients** have been treated with a Bristol Myers Squibb cell therapy in a clinical or commercial setting.
- Our commitment to cell therapy is backed by **more than 20 years** of experience and to build a robust portfolio to treat the patients of today and a promising pipeline to expand the reach of our therapies to many more patients in the future.

## Science on a cellular level

- As a leading cell therapy company and pioneer in modulating the body's immune response, Bristol Myers Squibb is uniquely positioned to bring the potential of cell therapy into a new frontier: **autoimmune diseases**, starting with a CD-19-targeted CAR T being investigated in forms of lupus and multiple sclerosis, as well as expanding our clinical programs into other autoimmune diseases.
- Building upon our first wave of cell therapies, we are exploring a potential first-in-class GPRC5D-targeted CAR T cell therapy and a dual-CAR asset to address the unmet needs of patients with relapsed or refractory multiple myeloma.

## Innovation on a cellular level

- In addition to our promising pipeline, we are exploring novel ways to make cell therapies more **efficient, scalable and accessible** through new and varied approaches, including allogeneic -or off-the-shelf - CAR T cell therapy, *in vivo* manufacturing and dual-targeting strategies
- With extensive discovery and development expertise and translational data capabilities, we are working toward a future where **multiple platforms, engineering features and targets** offer tailored options for patients across hematology, autoimmune diseases, rheumatologic and neuroinflammatory conditions, oncology and beyond.

## Delivery on a cellular level

- Today, **just two in 10 eligible patients receive cell therapy**. To address this gap in care, we're challenging current practices, assumptions and barriers that limit equitable access to treatment with CAR T cell therapy across communities.
- Partnering with stakeholders from across the healthcare ecosystem, we're leading initiatives designed to **ease patient burden without sacrificing patient safety and expand access in underserved communities**.
- So far, we have activated **more than 350 treatment centers** globally and are working to continue this momentum to reach more patients around the world.
- Bolstered by our experience across distinct targets and diseases, we continue to focus on **reducing complexity, improving turnaround time and consistency, and maintaining high quality** in our cell therapy development and manufacturing processes.

## Ambition on a cellular level

- Our drive to be the leader in delivering cell therapy to patients is made possible by **thousands of talented employees** collaborating across functions, geographies and areas of expertise.
- **We know that this vital work cannot be done alone:** we are partnering across a complex and interconnected ecosystem, including researchers, treaters and the advocacy community, all for the purpose of reaching patients and their families.

With the full weight of BMS, the Cell Therapy Organization, and our partnerships behind us, we are invested in every sense of the word in propelling the transformational potential of cell therapy forward, aiming toward a true revolution for patients.